

1. PREFACE

This document gives the information to download, install and use the EchoNAV Loader. This program is primarily used to download new (Beta) software releases from the PC into your satellite receiver. Furthermore you have also the possibility to upload the current database and channel lists to your PC.

2. COPYRIGHT

© 2002 EchoStar International Corporation. All rights reserved worldwide. This publication has been provided pursuant to an agreement containing restrictions on its use. This publication is also covered by Federal Copyright Law.

No part of this publication may be copied, distributed, transmitted, stored in a retrieval system or translated into any human or computer language, in any form or by any other means, electronically, mechanically, magnetically, manually or otherwise or disclosure to third parties without the express written permission of EchoStar International Corporation.

EchoStar International Corporation is possibly in the possession of patents, requests for patent approval, trademarks, copyrights and other intellectual property with respect to the contents within this publication. The submission of this publication does not imply you have got any license or other legal right for the use of the here above mentioned without the express written permission of EchoStar International Corporation.

- EchoStar, EchoNAV and Quality has a Name
are registered trademarks of EchoStar International Corporation;
- All other trademarks are the property of their respective owners or companies.

3. MINIMAL SYSTEM REQUIREMENTS

- Personal Computer (PC)
- Operating system Windows
- RS232 cable (0-modem cable)

4. INSTALLATION

You must install the EchoNAV Loader first onto the hard drive of your PC with a Windows operating system. The installation does not create any files in the setup folders of Windows or the registry. Installation is just a copy session to a recommended location.

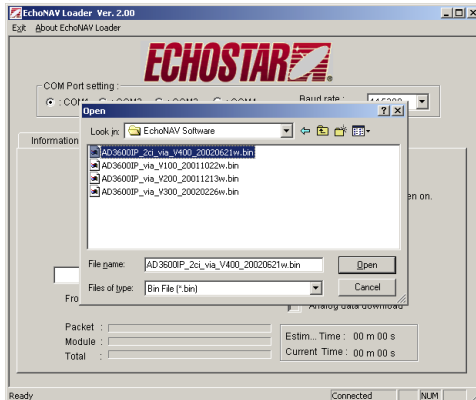
1. Download the EchoNAV Loader from the internet site www.echostar-int.com.
2. Unpack the WinZip file in C:\Program Files\EchoNAV Utilities\EchoNAV Loader\Loader Program Files
3. Switch off the PC and satellite receiver.
4. Connect the PC to the satellite receiver (SERIAL PORT) with a RS232 cable.
5. Switch on the PC and satellite receiver.
6. Open the EchoNAV Loader.



7. In the COM Port setting, set the correct Port (often Com Port1).
8. Set the Baud rate (transmission speed). Recommended speed is 115200.

5. DOWNLOAD THE SOFTWARE / DATABASE

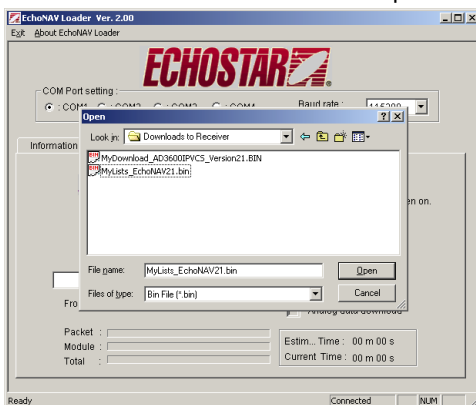
1. Open the EchoNAV Loader.
2. Click the Download tab.
3. Click the Browse button and in the Open dialog box, select the required software version. (free software versions are available from the download area on www.echostar-int.com).



4. Press the Open key to continue.
5. Follow the instructions as given by the message boxes.
6. Wait for the download to complete.

6. UPLOAD THE DATABASE

1. Open the EchoNAV Loader.
2. Click the Upload tab.
3. Click the Browse button and in the Open dialog box, select the required software version.



4. Press the Enter key to continue.
5. Follow the instructions as given by the message boxes.
6. Wait for the upload to complete.

7. MODIFY THE DATABASE

1. Download the available free of charge EchoNAV Editor from the download area on www.echostar-int.com.