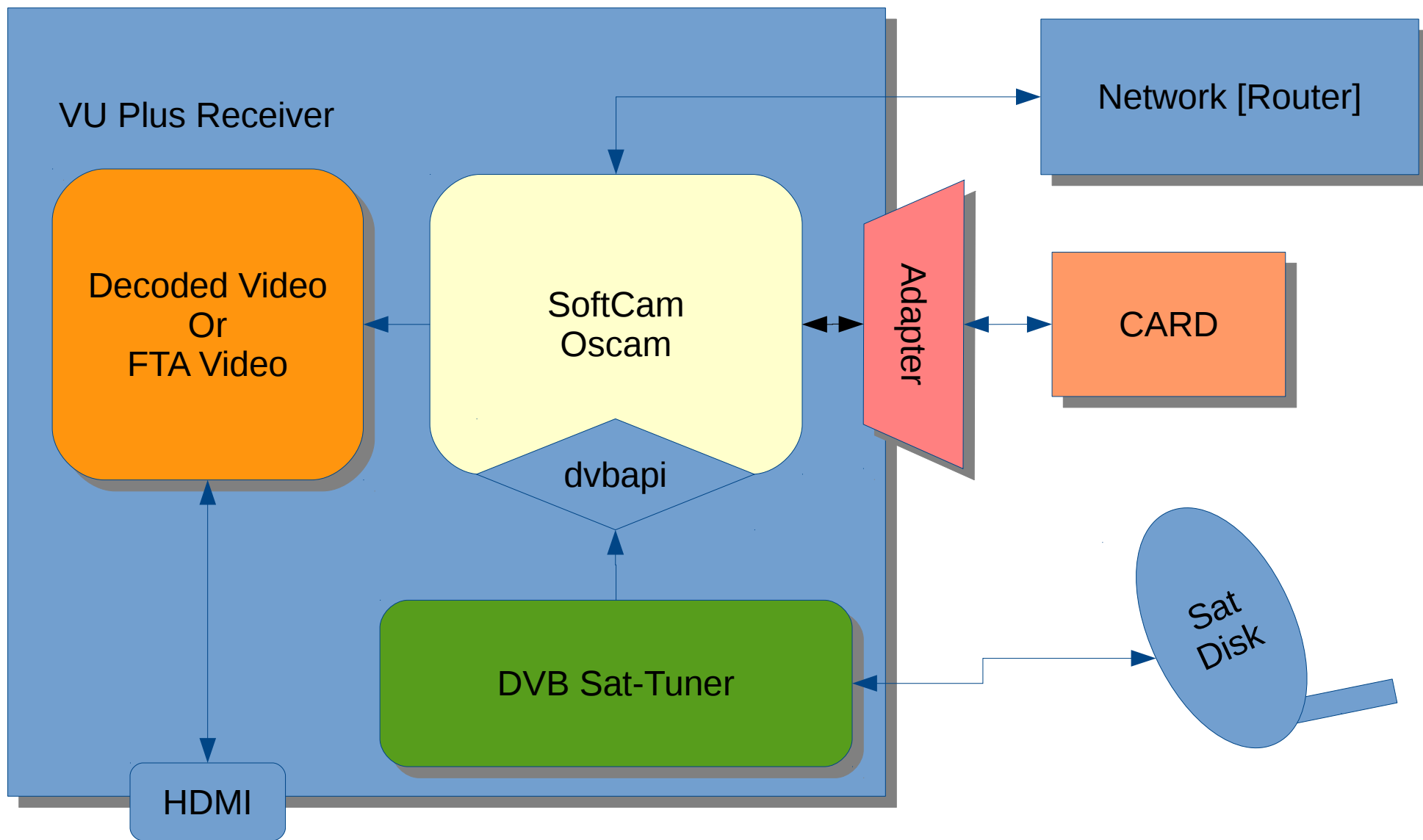
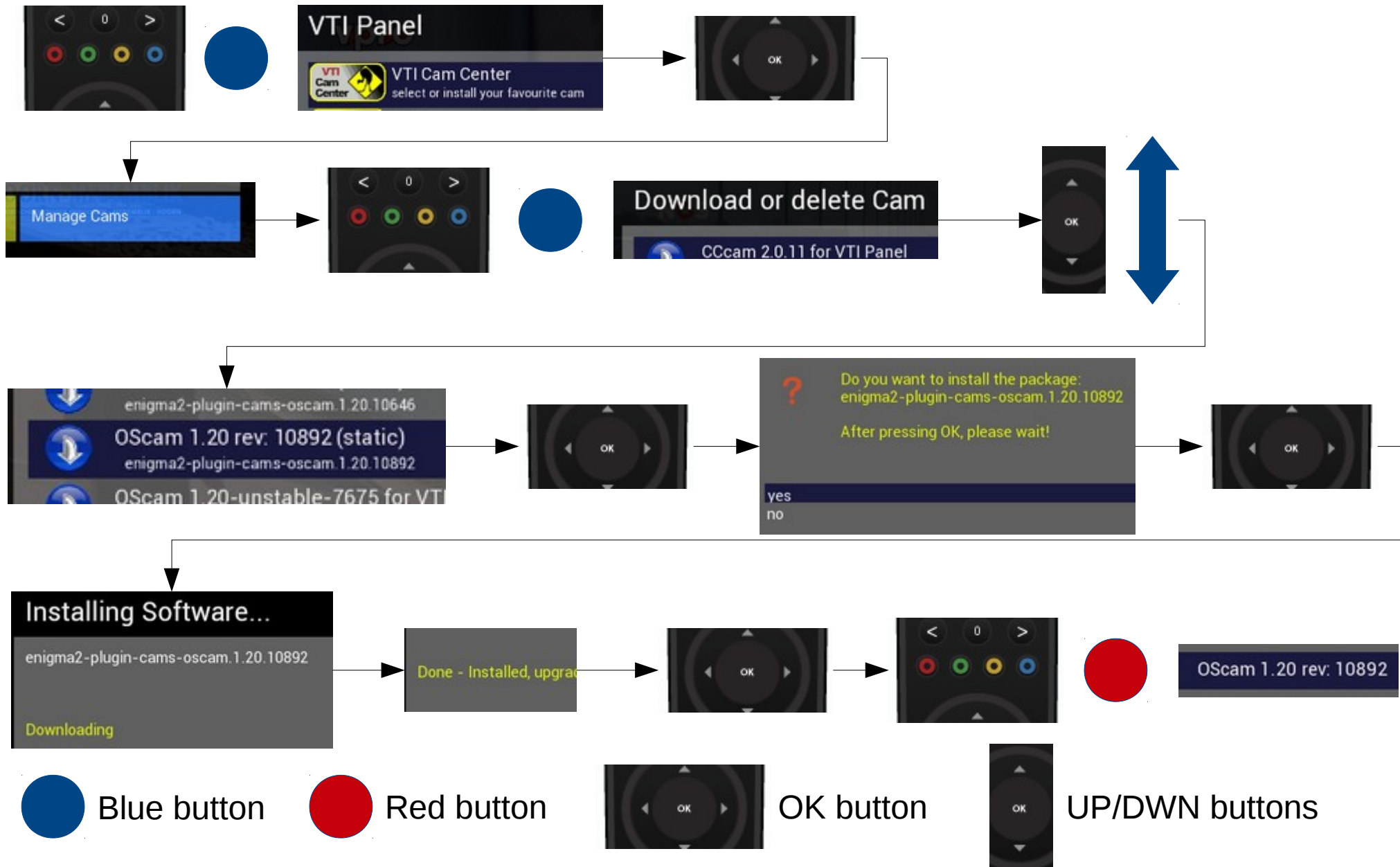


Oscam



Install OScam (Vti 8.2 VU+)



Installed Oscam files

On the previous page we installed Oscam on a Vti 8.2 enigma2 Satbox.

Files that are now installed are:

- Oscam (bin)
- Oscam (script for start/stop/restart)

There are **no** configuration files installed.

All configuration files must be manual added to the dedicated config folder.

See next slide for more info.

Location of basic files

1 x Binary file location:

/usr/bin

oscam_XXXX *

The _xxx can be any combination of letters or numbers

1 x Script file location:

/usr/script

oscam_XXXX *

The _xxx can be any combination of letters or numbers

Multiple Configuration files location:

/etc/tuxbox/config

oscam.server *

oscam.conf *

oscam.user

* These file MUST be minimal present for oscam to work