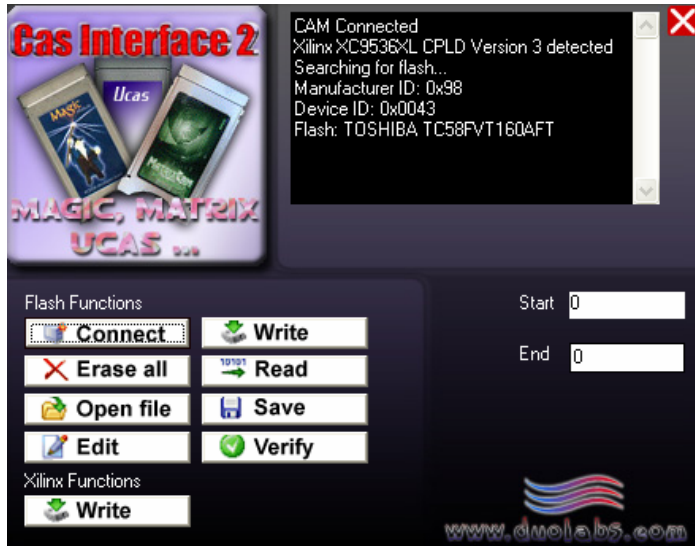


HOW TO PROGRAM MM WITH UPDATED *.MBF FILES USING THE CAS 2 V3.3.1 FROM DUOLABS.

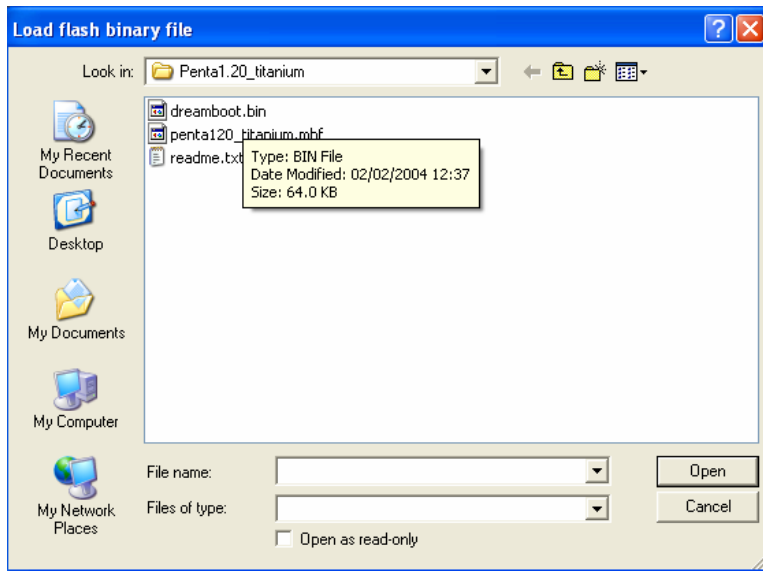
Many of you know what its like to wait for someone to create a bin file for us CAS 2 users. Well no more searching or waiting. Just follow these easy steps. I have based this tutorial on the latest co**x 23-03-04.mbf file, as an example.



Install the latest CAS 2 Studio and start the program, then press connect



Press ERASE ALL, when prompted select yes.



The next step is to program the dreamboot.bin. In CAS 2 Select LOAD FILE



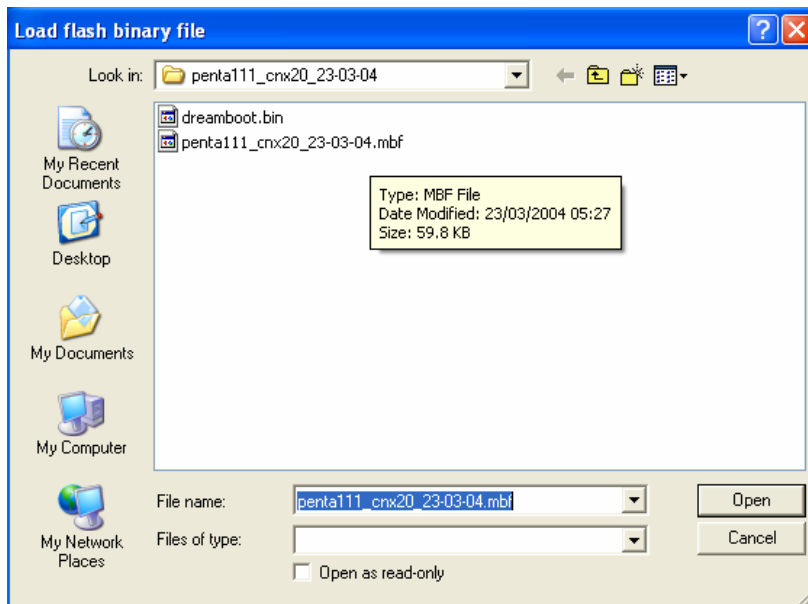
Now the file is loaded, Press WRITE.



Now press VERIFY to make sure all went well in this 1st step.



Important: In the START Address change it to 10000, then Select OPEN FILE



Now load the latest penta.mbf file



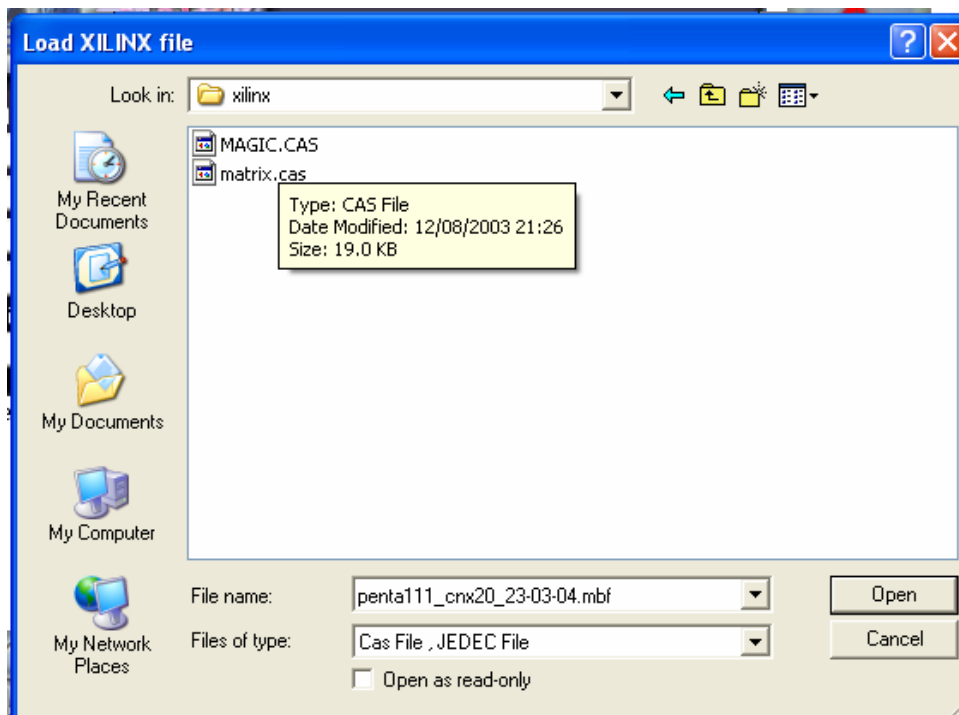
As you can see the END address adjusted correctly once the file is loaded



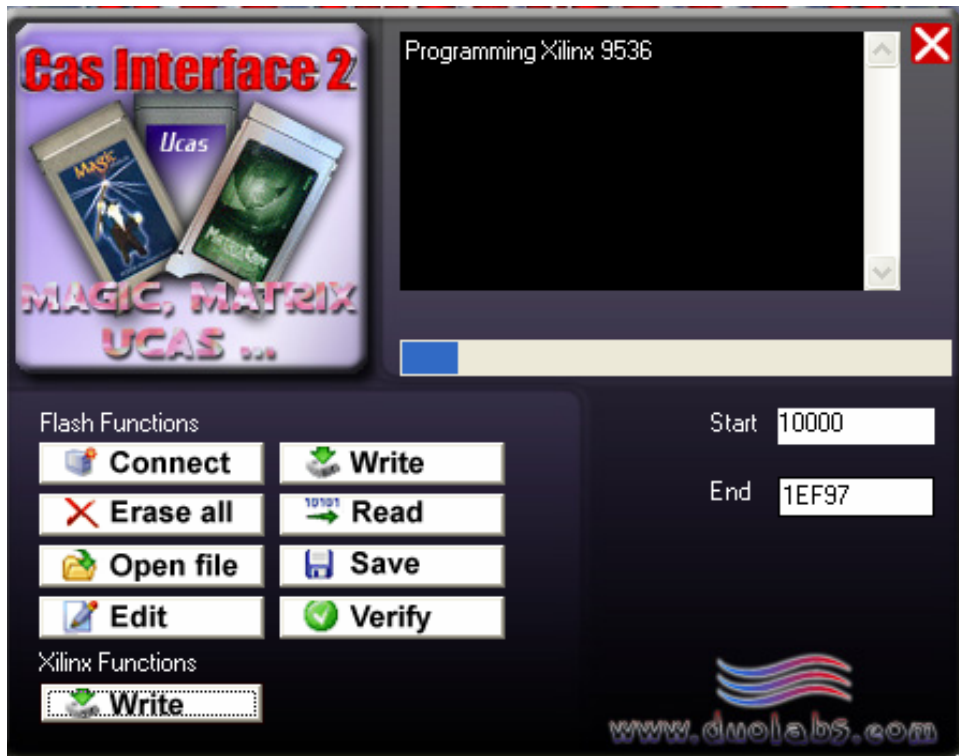
Once again press WRITE



After Writing has completed, Press VERIFY.



Last step is to load and write the Xilinx File, Select Xilinx and open the MAGIC.CAS file.



No need to press WRITE as it will start the process automatically.
All that's left is to EXIT the program disconnect the USB lead, remove CAM and away you go....END☺

I hope you all understand what I have done here, im not the best tut writer lol.

Regards go to ALL AT the FOLLOWING "SAT GROUPS":

MODSHACK: Pacmans home;-)

SATDUDEZ: Excellent People and members;-)

TOECUTTERS: Massive site and all respect to him 100%;-)

Lastly ALL AT DUOLABS for the excellent CAS 2;-)

See ya all soon PACMAN

also known as Media Manic and BoBZ the Burner