



CAM UPDATE TOOL

Installation and user's guide

Version 1.0

CAM UPDATE TOOL

Installation and user's guide

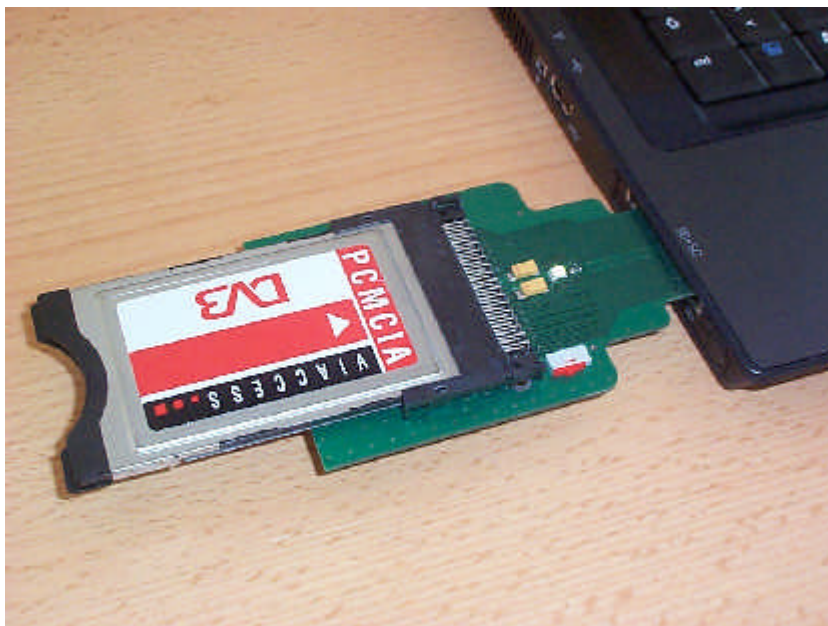


1.0 Minimum system requirement

- Computer with a free PC-Card slot
- Microsoft Windows ® 2000 or XP
- 1MB free hard disc space

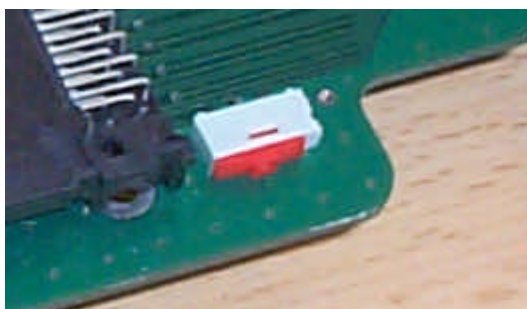
2.0 CAM insertion

Please insert your CAM (Conditional Access Module) in the extender and insert the extender in a free PC-Card slot.



Note: Some laptops are able to detect a CAM without extender. You do not need the extender, when you get the Windows message "new device detected" after insertion of the module into the PC card slot (in this case it is detected by Windows). To get an extender, please contact your reseller or distributor.

Note: There are two versions of extenders available. If your extender has a switch (see pictures above and below), please be sure that this switch is set to the left, like shown on the picture.



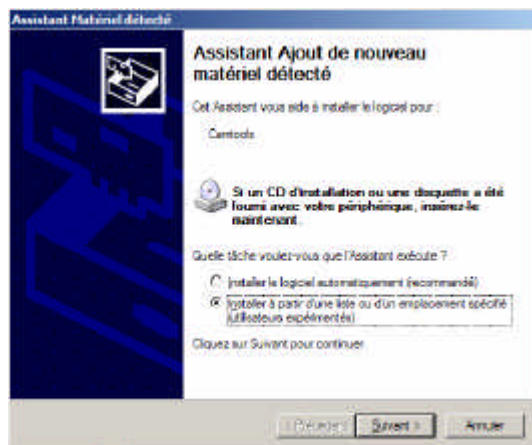
CAM UPDATE TOOL

Installation and user's guide

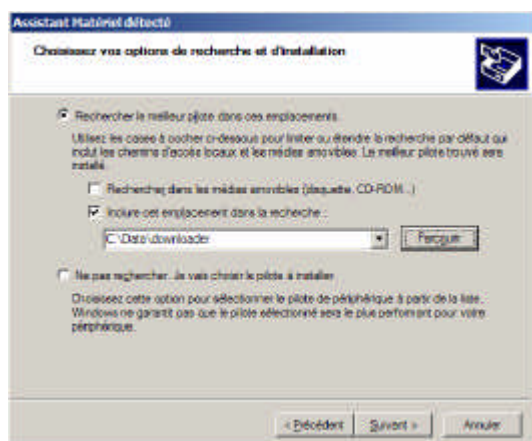


3.0 Driver installation

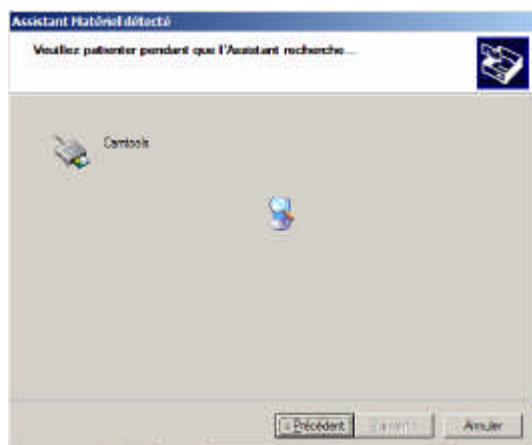
After module insertion, Windows will open this window. Please select “Setup from a list or a specific location (advanced users)”. Then, next.



Select “look for the best driver in those locations”. Please browse your computer to set the folder where you unzipped the file downloaded from the web. Then next.



Your computer will search for drivers.

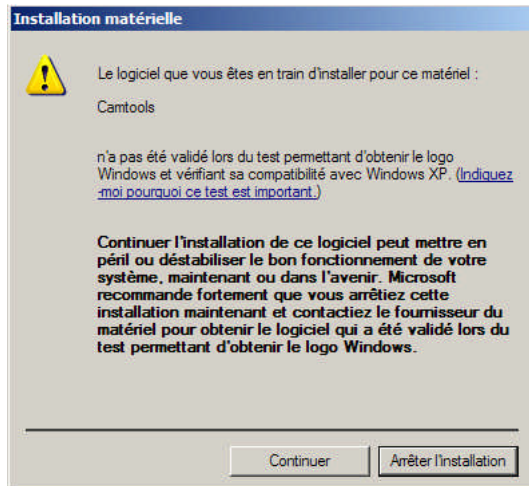


CAM UPDATE TOOL

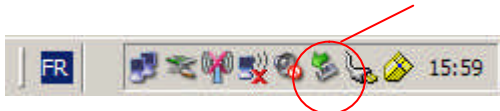
Installation and user's guide



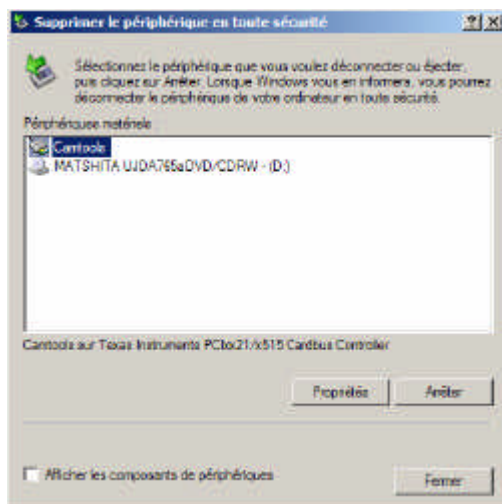
When the driver has been found, you should get the following message (only for Microsoft Windows XP users). Please select “Continue”.



Now, your driver is well setup. You can see your CAM in the task bar, by double-clicking on the green arrow as shown below



Your CAM is listed as “Camtools”.



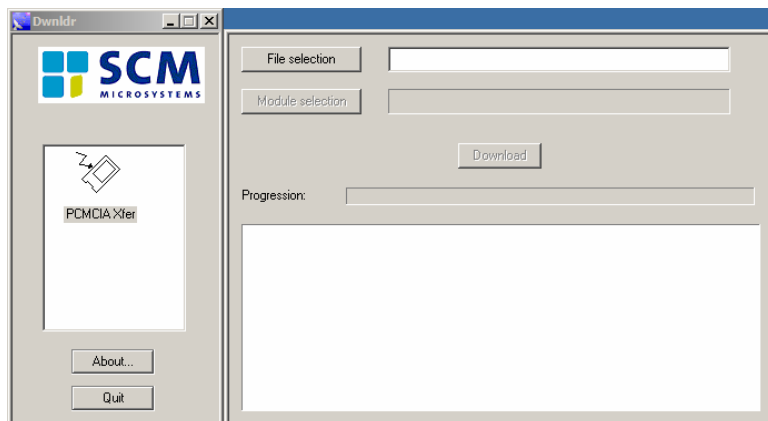
CAM UPDATE TOOL

Installation and user's guide

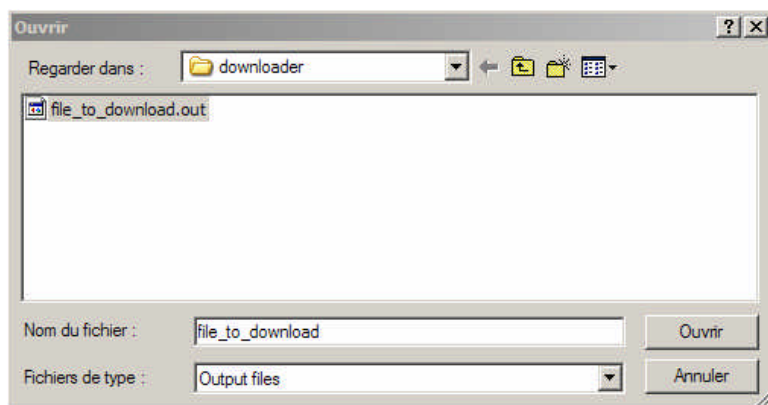


4.0 Download process

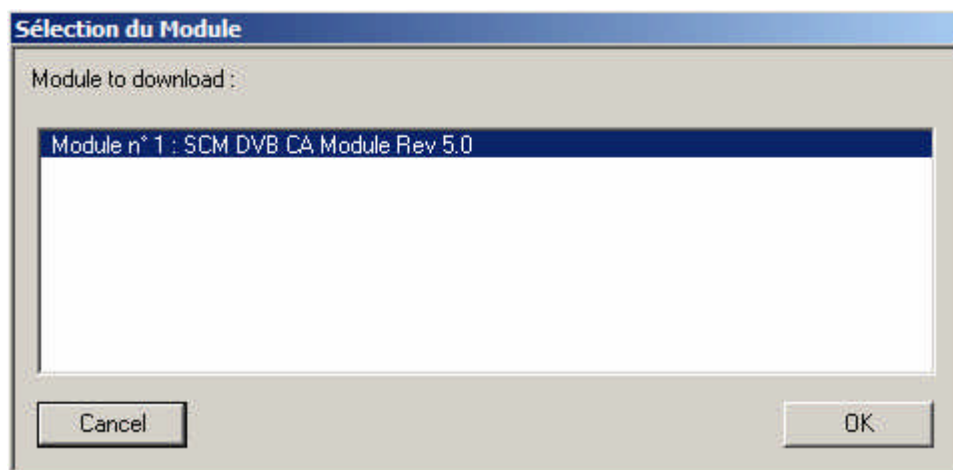
Please launch the Downloader 2.0 application (start menu / programs / SCM Microsystems / Downloader / Downloader 2.0). The following window will be opened.



Click on "File selection" and browse for the folder where you unzipped the file downloaded from the SCM website. Look for the file with ".out" extension and mark it with your mouse.



Now, you have to select the module you want to upgrade. Select the SCM DVB CA Module and press OK.

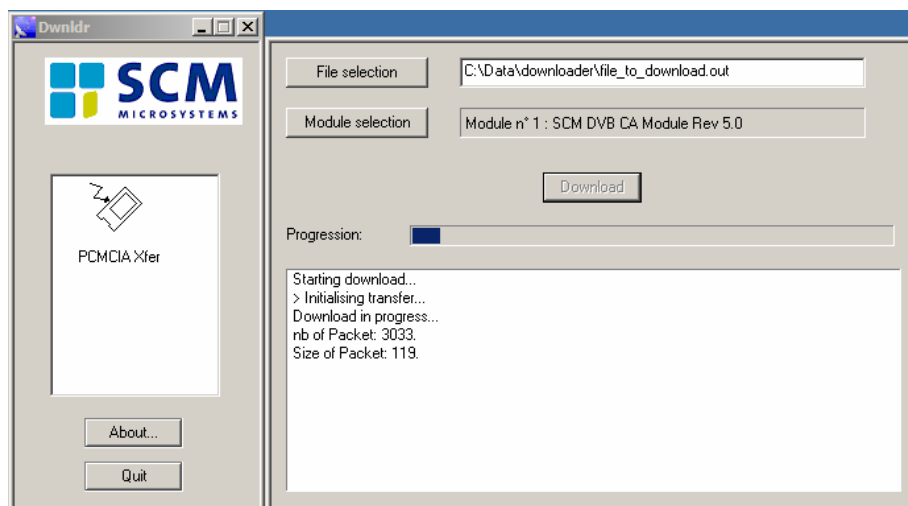


CAM UPDATE TOOL

Installation and user's guide



Now, you can start your download. The download may take a few minutes. Attention: Never extract the module or power down your computer during this download. Wait until it is finished, otherwise your CAM will not work anymore.



When the download is finished, you should get the message: "Download procedure successful > End of transfer". Now, you can extract your module and insert it in your decoder.

