



# PLi® Garnet EPG Handling HOWTO

PLi® Team has made a lot of improvements to how the EPG is handled on the Dreambox.

This document will show you a couple of the new possibilities created.

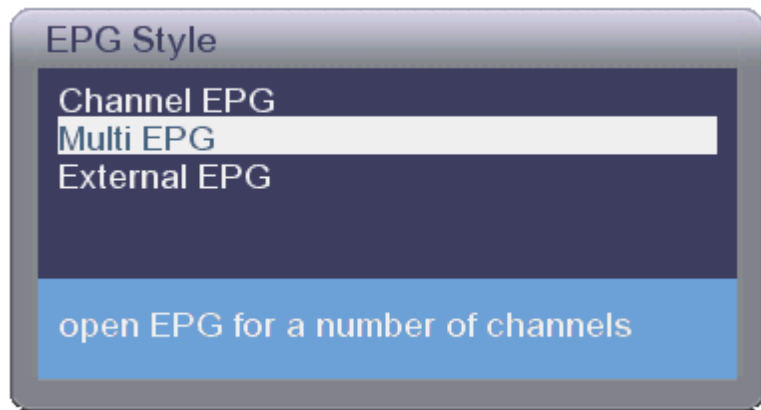
There are three types of EPG available. To select your EPG style, double press the RED button. That means pressing it twice rapidly.

*You should get a menu that looks like this*

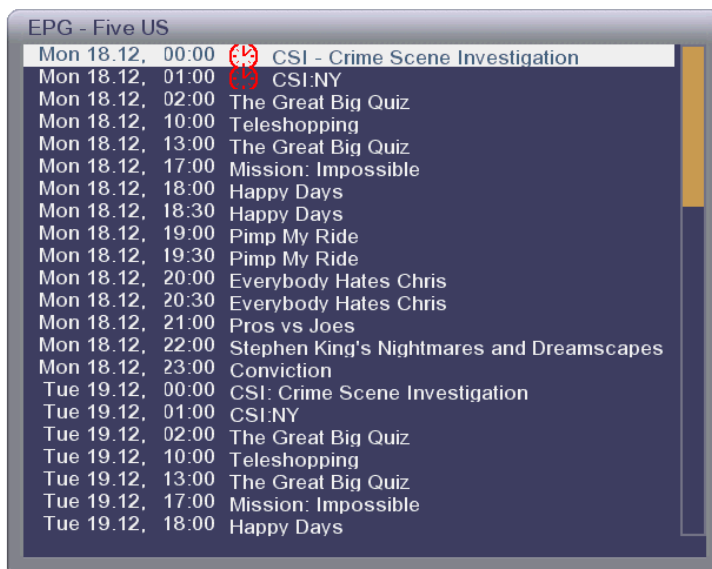
External EPG will run MV. MV is a project by itself and will not be covered in this HOWTO. All info on MV can be found here: <http://sourceforge.net/projects/mv-plugin/>

Let's have a look at the other two options.

*Select the EPG style you want to have as your default option.*



## CHANNEL EPG

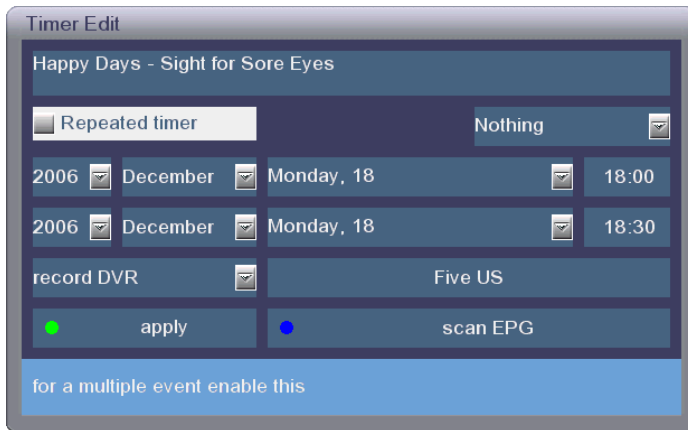


**Channel EPG will show you the EPG for the channel you are on right now.**

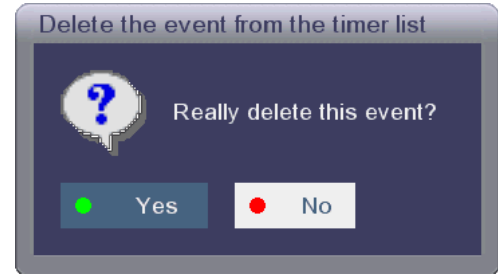
**The RED Watch Icon tells you that you have a recording scheduled.**

**Pressing OK on a program will give you details about that program. (If available)**

To schedule a recording you can press the **GREEN** button on any program you want and you will get the option of recording the show.



Pressing **RED** on a show that was scheduled gives you the option to delete the event.



## MULTI EPG

I believe that the Multi EPG is the most useful. It gives you an overview of all channels in your current bouquet.

1 ... 6 select hours ● Add ● Del Timer

17.12. 23:40 - 00:40 Match of the Day 2  
Adrian Chiles presents highlights of the weekend's Barclays Premiership football action, including today's games involving title-chasing Chelsea and Manchester United. [S]

Mon 18 Dec	00:30	01:00	01:30	02:00	02:30	03:00
BBC One E	Match	French Connection II				Sign Zone:Holby City
BBC Two E	Cri	St	Shadow of the Vampi		Curdled	
BBC Three	Two Pnts of	Two Pints of Lager	The Real Hustle: The Twelve Scams of		Torchwood	Torch Tw wood: o
BBC Four 2	Saint Joan	The Late Edition	Legends: Julie London - The Lady's Not a Vamp		Arena: Saints	
Sky Three	Portrait of a Serial	Britain's Hardest		The Villa		Shackleton and Scott
Channel 4 L	Buffalo Soldiers		The Death Squads		4 Music:The	Freesports on 4
Five	World's Wildest Police Videos		Adventu re	Race and	NFL Live	
Five US	CSI - Crime Scene	CSI:NY			The Great Big Quiz	

To move around in this list you can use the arrow keys on your remote



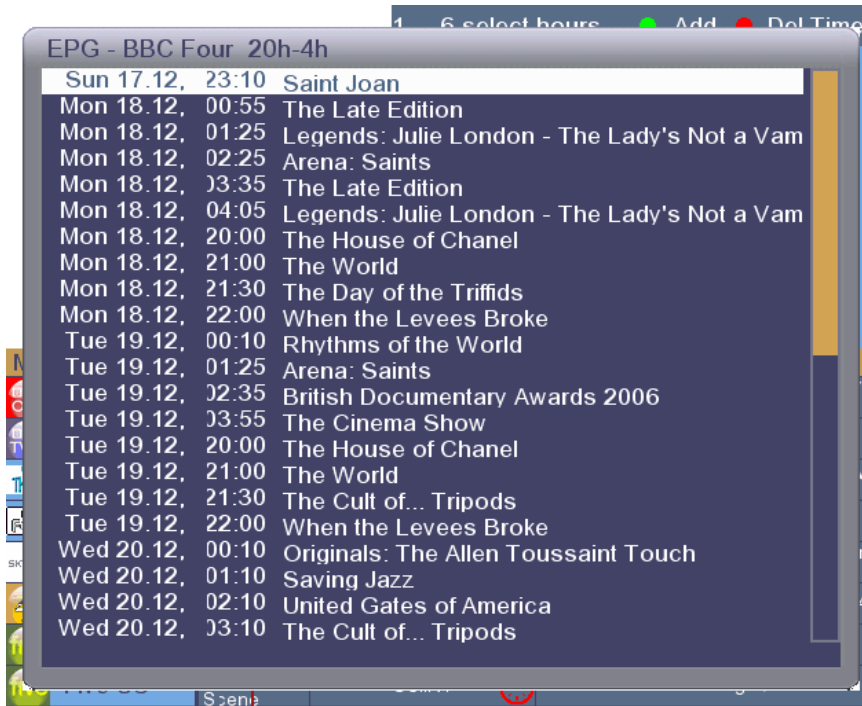
To jump to the next timewindow, like in our example, it shows the EPG till 03:00, if we want to jump quickly to the next timeline we can do so with the < > keys next to the 0 on the numbers pad.



This will then move the entire EPG to 04:00 making it easy and fast to navigate the EPG.

Now, let's say you have navigated to a certain channel while in Multi EPG mode, but you would like to see the Channel EPG for that specific channel.

Press the DREAM or MENU button below the Bouquet on your remote.

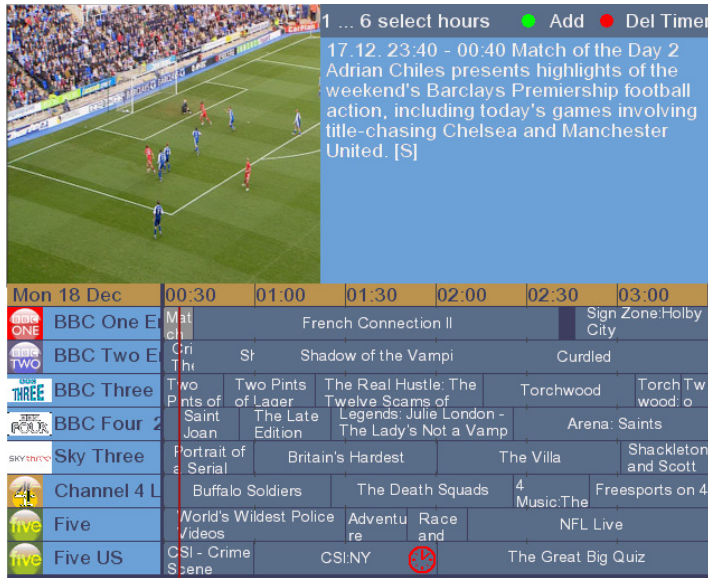


Now you will get the Channel EPG superimposed on the Multi EPG.

It's now real easy to see what's playing on a specific channel.

To go back to the Multi EPG just press LAME or EXIT

Now let's take a look at the Multi EPG screen and see how you can customize it to suit your needs.



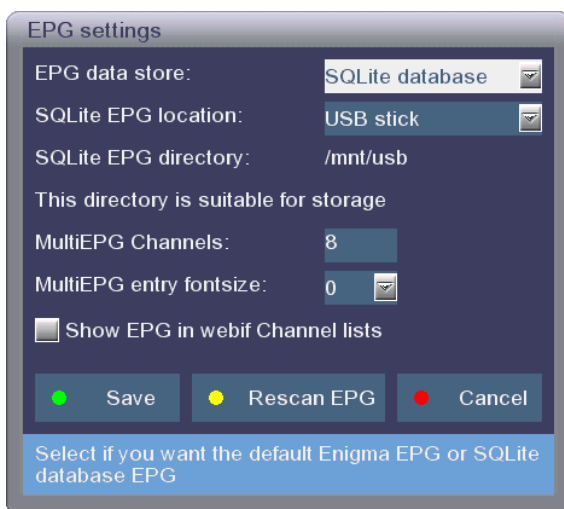
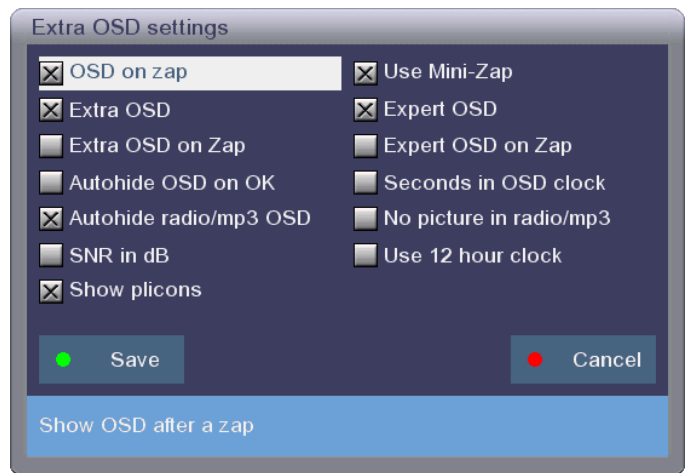
The window that shows you the preview of the channel is called PIG (Picture In Graphics)

Next to the PIG there is some information on the program you have selected with the navigation buttons.

On the left you see the plicon of the channel.

**Things you can customize :**

**Show plicons YES or NO**  
**In the PLi Setup go to Extra OSD settings, here you can select the Show plicons. Default setting is ON**



**In the PLi Setup, in EPG Settings you can select how many channels you want to see in the Multi EPG**

**You can also select the fontsize of the info in the EPG.**

## CHECKING EPG FOR CHANNELS IN A DIFFERENT BOUQUET

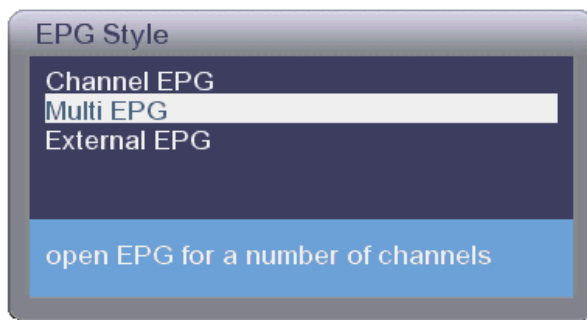
You all know this problem, you are watching BBC One and you want to check the EPG for HBO. You can now do that without switching the channel.



Press the BOUQUET button to get your channel overview. Now use the arrows to navigate to the channel you want to check the EPG for and press the INFO button.



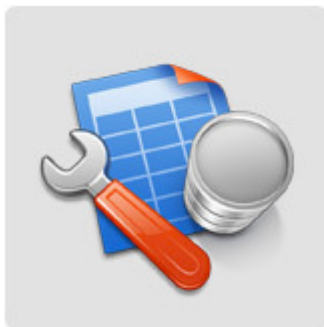
As soon as you press the INFO button you will get the EPG selection menu.



Now if you want to have the overview of ALL channels in that bouquet, select Multi EPG. To view the EPG for that single channel, select Channel EPG. You can now even schedule new recordings.

No need to change the channel 😊

## SQLITE DATABASE FOR EPG



Those who have been paying attention will have noticed the SQLite setting.

SQLite is another PLi® innovation. It's been in our images since the Flubber release, let me give you some details as to the benefits.

You may have wondered how come we have EPG data for the UK channels, that is because we didn't get the EPG info from the satellite stream, but from a small tool that logs on to the radiotimes website and feeds the EPG information into the SQLite database.

The plugin is available for download from our server. Look for Dreambox EPG config (1.0)

Anyone can develop plugins or even software that runs on the PC that will update the EPG on the Dreambox

The major advantage is now that the Dreambox reads the info from SQL, the EPG data is available in Enigma itself, any 'old' tool that checked the Enigma EPG will have access to the data. With the addition of SQLite EPG database it's now possible to have access to EPG for any channel as long as some tool gets the information from the web and updates the database.

You can select where you want the SQLite database to reside, USB, HDD or even a custom location.

## HOW PLICONS ARE HANDLED IN PLI®

The icons themselves reside in `/share/tuxbox/enigma/pictures/mvicons`

PLi® is reading the plicon information from the MV icons.esml list that can be found in `/var/tuxbox/config/mv`

This is how the icons.esml list is structured:

```

```

What this means is that the channel called "Eurosport" will show up with the icon "europe.eurosport.png" That is the link to the actual PNG file itself. **DO NOT CHANGE THIS**

If you have a different name in your channel list for Eurosport, e.g. EuroSport UK then you can add an entry like this :

```
<map name="EuroSport UK" img="Eurosport" />
```

The first part is your channel name, the second 'img' part is the reference that was made to the PNG file.

*If you do make additions or improvements, then please forward them to the PLi® team, in the format described as above. Maybe we will include it in our next image. Do not send entire files, only the setting you have added. If you have more png files, then please include those as well, in the same naming convention.*

## SHOWING PLICONS IN THE OSD

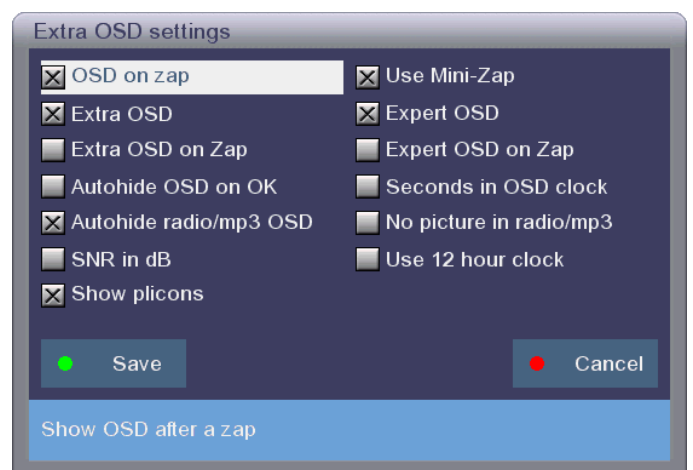
Showing a plicon in a PLi skin is easy to implement for skin builders.

Skin variable is 'plicon'. us it as `<eLabel position="0:34" name="plicon" />`

PLi® have provided a version of our MediaPLi skin that has been adapted to show plicons. You can download this skin from our servers.

You might want to disable the 'Use Mini-Zap' if you want to see your plicons. Because the plicon is located in the top part of the OSD information.

Or leave it as it is and press OK while watching a channel, that will also give you the full OSD.



PLi® images can be downloaded from :

<http://www.pli-images.org>

PLi® is a non-profit group of satellite enthusiasts, striving to improve the Enigma software that runs on the Dreambox.

Dreambox name and logo copyright by Dream Multimedia GmbH  
SQLite information at <http://www.sqlite.org/>

