



This manual is based on Linkey firmware 1.**

Index

Driver installation	: 2
S2Eupdate firmware updater	: 3
Web Interface	: 5
Network setup	: 6



Driver installation

Download the linkey driver: <http://www.maxdigital.nl/forum/download.php?id=98>

First you must set the linkey in Bootloader setup:

Connect the linkey on your network and login in the linkey.
(more information for login the linkey you can find on page: 5)



[Network Settings](#)

[System Settings](#)

Select System Settings.



system tools

Password for user 'admin'

Retype your password

Save

Restart

FactoryReset

Bootloader

Press now on Bootloader. (now the linkey will go in bootloader status. You must load new firmware to use the linkey again)

You can now install the driver on your computer.
Connect the linkey on your computer through the USB cable.


Normally a popup will come up with the question if you want to install a driver.

Choice now:

Browse my computer for driver software.

Go to the directory where you placed the linkey drivers. (File must be unzipped)

Press next and the driver will be installed automatically.

If it's done you'll will see  Linkey USB driver Close the window, now the driver is installed.



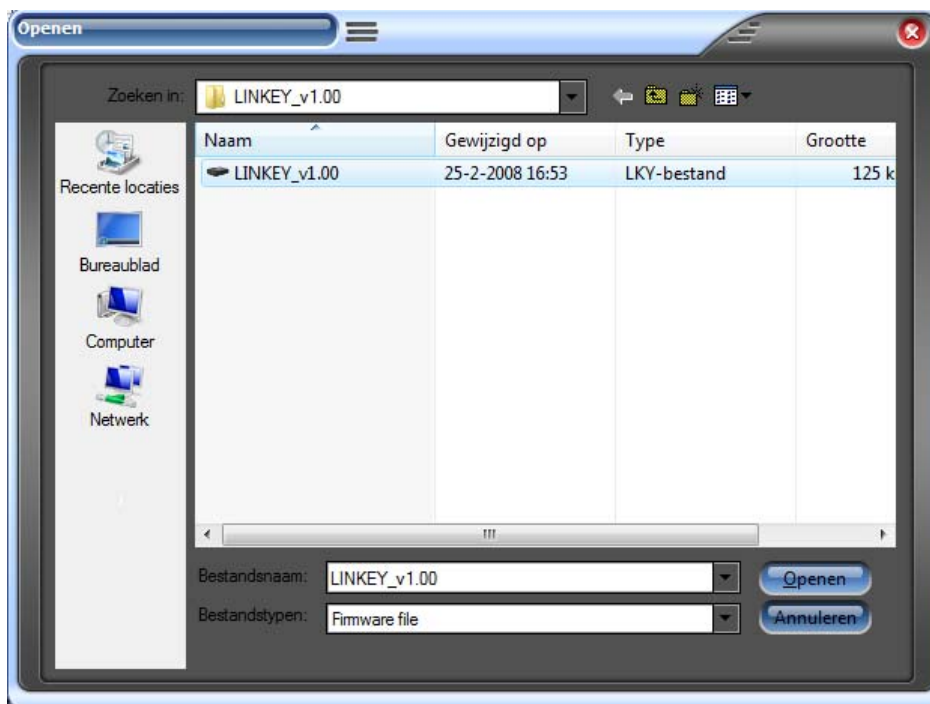
S2Eupdate firmware updater.

Download the S2Eupdater: <http://www.maxdigital.nl/forum/download.php?id=95>

Install now the S2Eupdater and open a section.



Hit Update firmware and select the new firmware you want to install on your linkey



Click on open, now the program will be stand in loading mode.



It's looking now for a device.
Connect the linkey with an USB cable to the computer.



The device will be found and the software will be placed in the receiver.



When "Update was successful" appears than the device is programmed,
You can disconnect the linkey and the linkey software is programmed.



Web Interface .

Through a webinterface you can set all the settings.

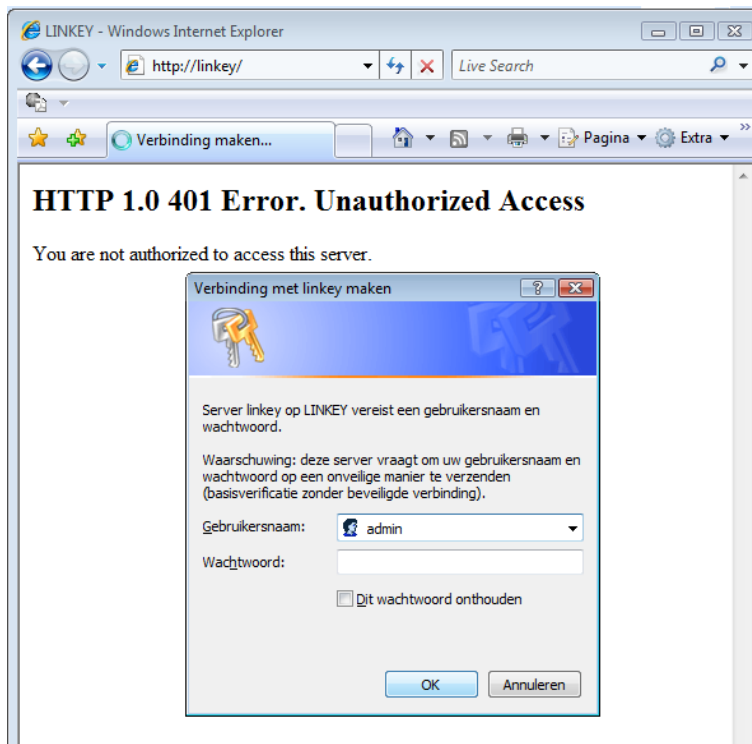
You can through an internet explorer login in the webinterface.

In the address section you must place http:// with the right IP.

When you use a new linkey and your router support device names

than you can login in the webinterface through <http://linkey>

(You can change device name “linkey” if you want by network section)



When you login to the linkey than a security popup will be shown.

The linkey username is: admin

The password you can set if you want in the webinterface by system settings



-
- [Network Settings](#)
 - [System Settings](#)
 - [SSSP/Seasonlink Settings](#)
 - [Virtual Seca Card Settings](#)
 - [CCcam Settings](#)
 - [Gbox Settings](#)
 - [Newcamd Settings](#)
 - [Radegast Settings](#)
 - [Show Server Status](#)
 - [Show Online Shares](#)



Network setup

The Linkey is standard set on DHCP.

Through the webinterface you can add the network settings:

Login the webinterface and select network settings



Network Settings

Here you can set if you want to use DHCP or fixed network.

Change the settings like you want and confirm with DHCP or save settings button.



LAN IP Address	<input type="text" value="***.***.***.***"/>
LAN Net Mask	<input type="text" value="***.***.***.***"/>
Default Gateway	<input type="text" value="***.***.***.***"/>
Primary DNS Server	<input type="text" value="***.***.***.***"/>
Secondary DNS Server	<input type="text" value="***.***.***.***"/>
MAC Address	<input type="text" value="1e.30.6c.a2.45.5e"/>
device name	<input type="text" value="LINKEY"/>

When the linkey isn't recognised anymore, than you must reset the Ethernet settings.

This you can do by loading new firmware in the device or set the Ethernet settings through USB with the follow programm:

<http://www.maxdigital.nl/forum/download.php?id=96>