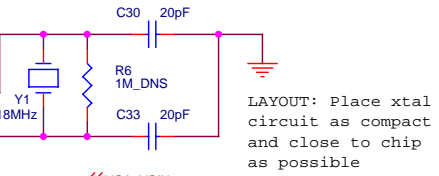
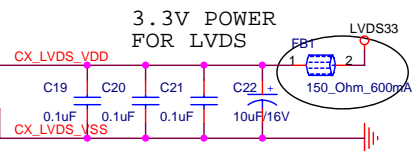
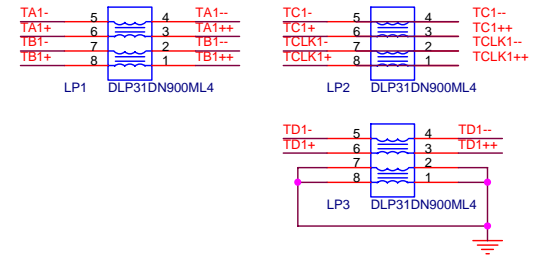
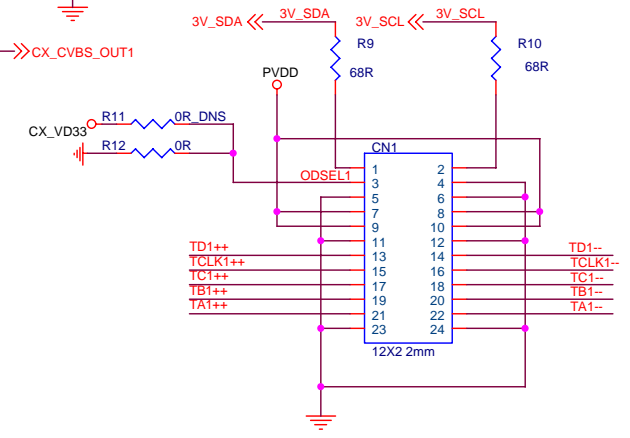


**SVP-CX32_208
(1/4)
ANALOG I/O
LVDS & MISC**



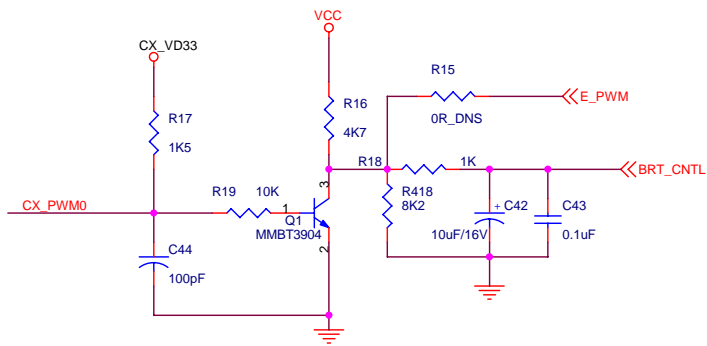
LAYOUT: Place xtal circuit as compact and close to chip as possible



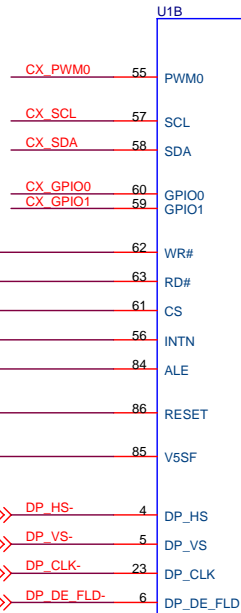
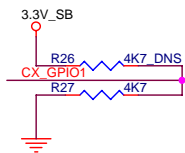
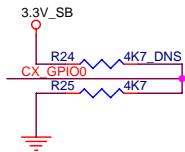
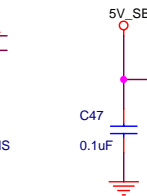
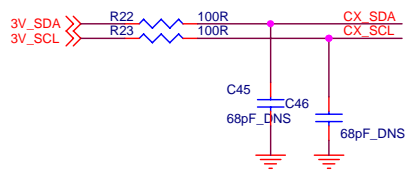
DEFINITION	Pin Name
YPbPr1	Y_G1,PB_B1,PR_R1
USB/YPbPr2	Y_G2,PB_B2,PR_R2
S/YC_1	PR_R3,C
S/YC_2	PB_B3,FB2
TUNER	CVBS1
AV1-4 SWITCH	Y_G3
NC	FS2
VGA_RGB	PC_R,PC_G,PC_B

PRELIMINARY

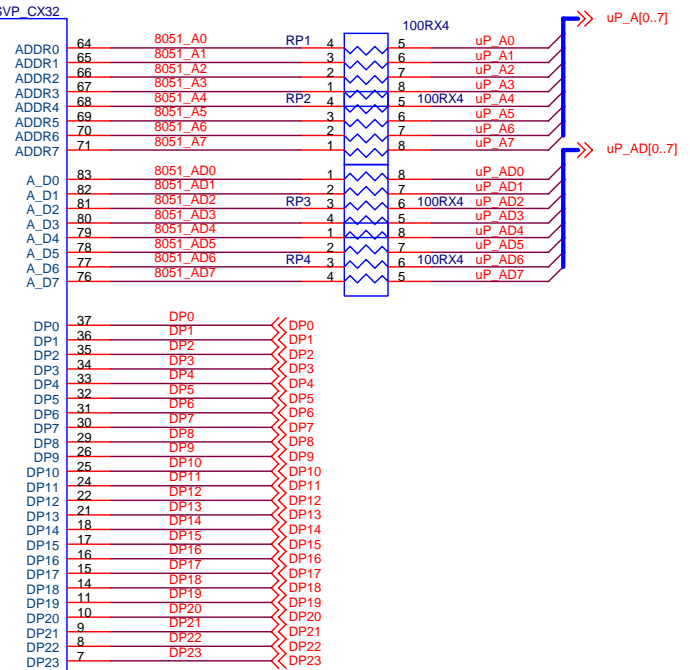
Fuzhou Walasey Technology Limited Company		
Title	BLOCK DIAGRAM	
Size B	Document Number 50TR05A FLAT PANEL TV_MAIN	Rev 1.0
Date	Monday, February 27, 2006	Sheet 1 of 21



I2C Slave Address is fixed to 0x7e/0x7f



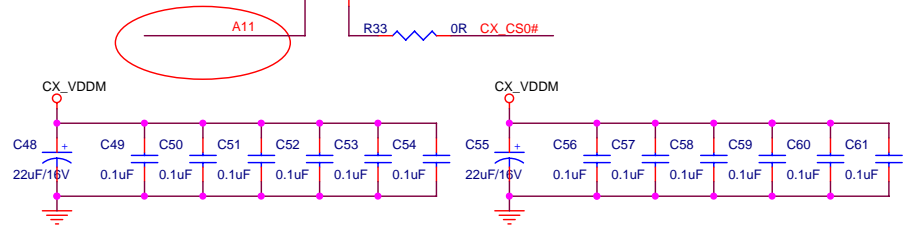
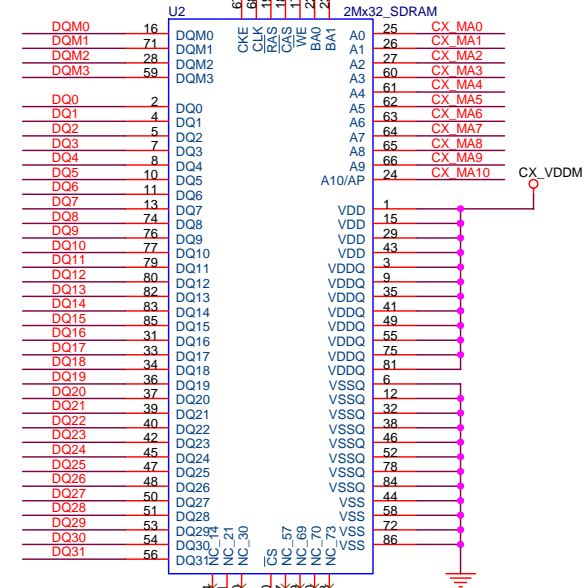
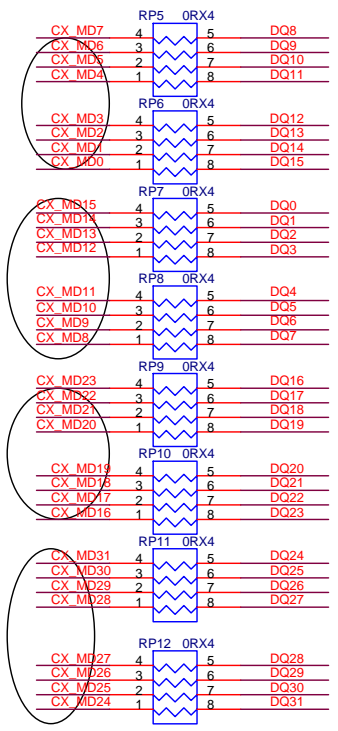
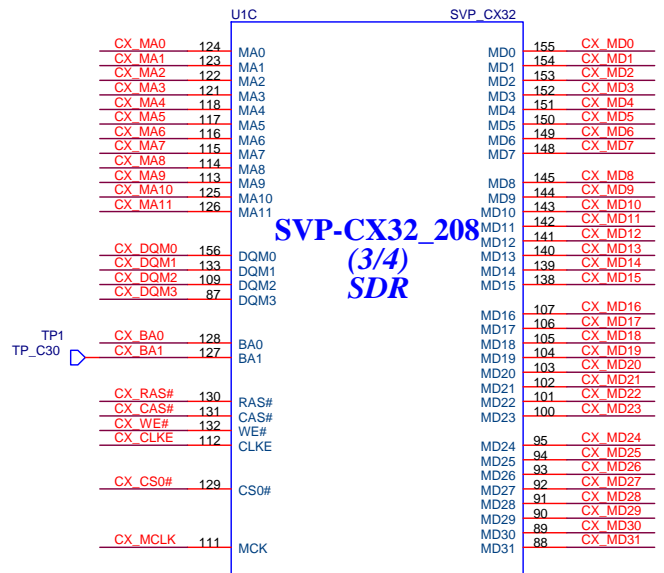
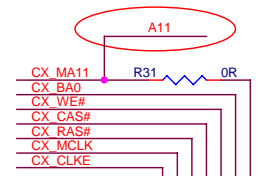
SVP-CX32_208 (2/4) CPU INTERFACE DIGITAL OUT



Pin Name	Pin No.	1 (HIGH)	0 (LOW)
GPIO0		MPU in A/D Multiplex Mode	MPU in A/D Separate Mode
GPIO1		Use Rising Edge of WR# to latch data	Use Falling Edge of WR# to latch data

Fuzhou Walasey Technology Limited Company		
Title BLOCK DIAGRAM		
Size B	Document Number 50TR05A FLAT PANEL TV_MAIN	Rev 1.0
Date:	Monday, February 27, 2006	Sheet 2 of 21

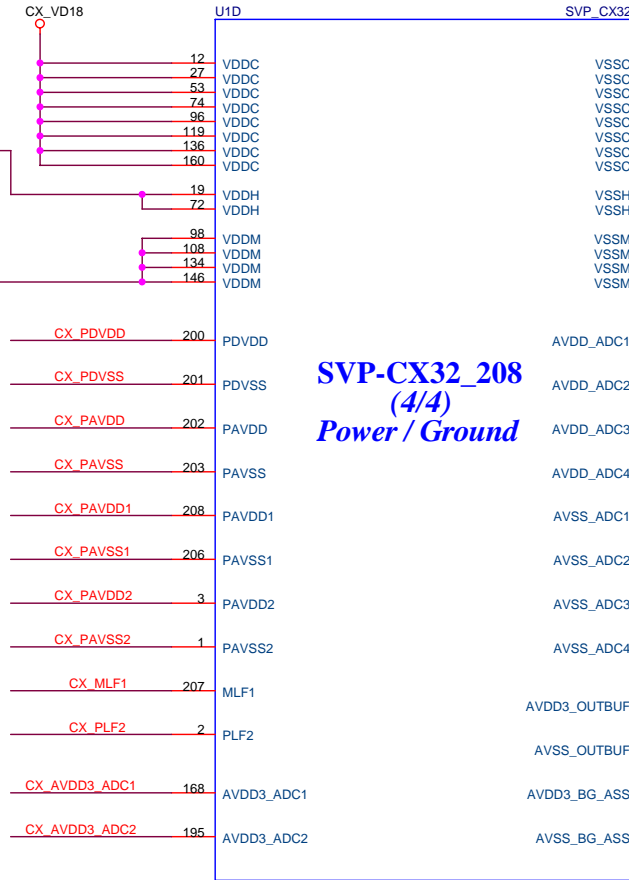
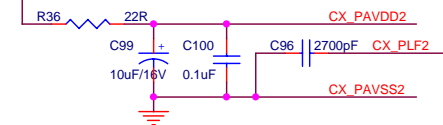
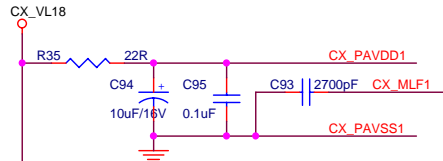
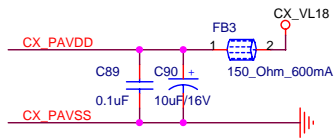
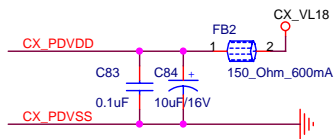
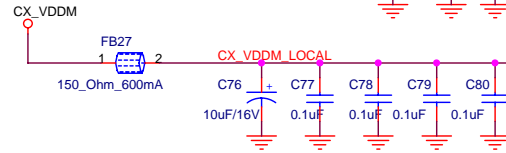
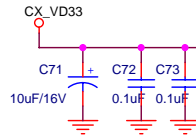
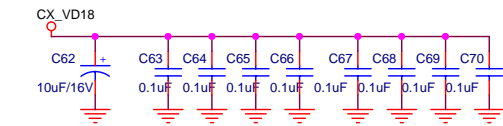
PRELIMINARY



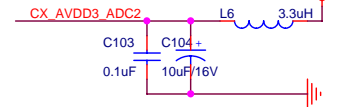
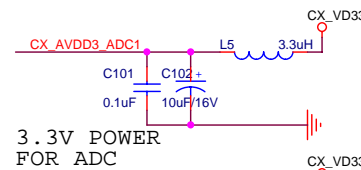
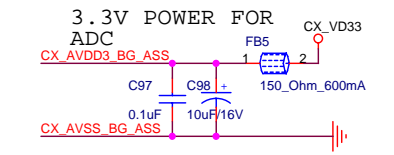
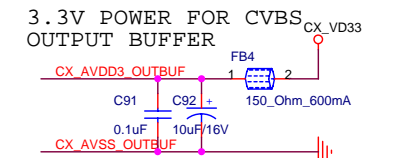
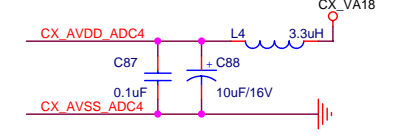
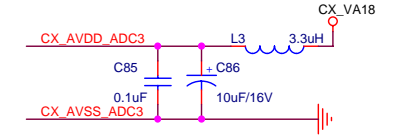
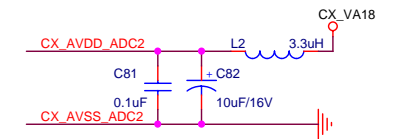
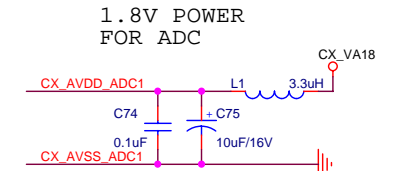
SDRAM DECOUPLING CAPACITORS

PRELIMINARY

Fuzhou Walasey Technology Limited Company		
Title BLOCK DIAGRAM		
Size B	Document Number 50TR05A FLAT PANEL TV_MAIN	Rev 1.0
Date: Monday, February 27, 2006	Sheet 3	of 21

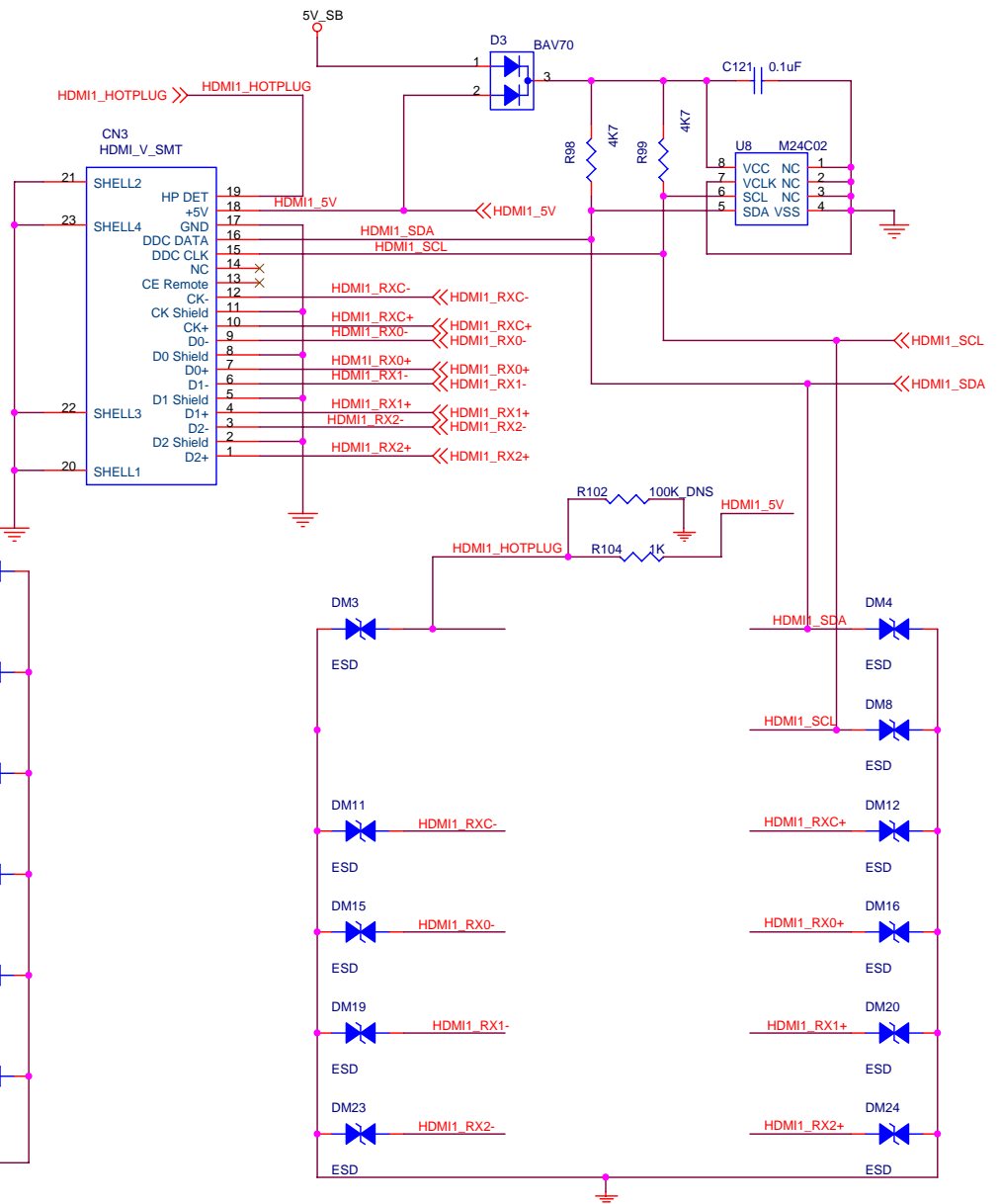
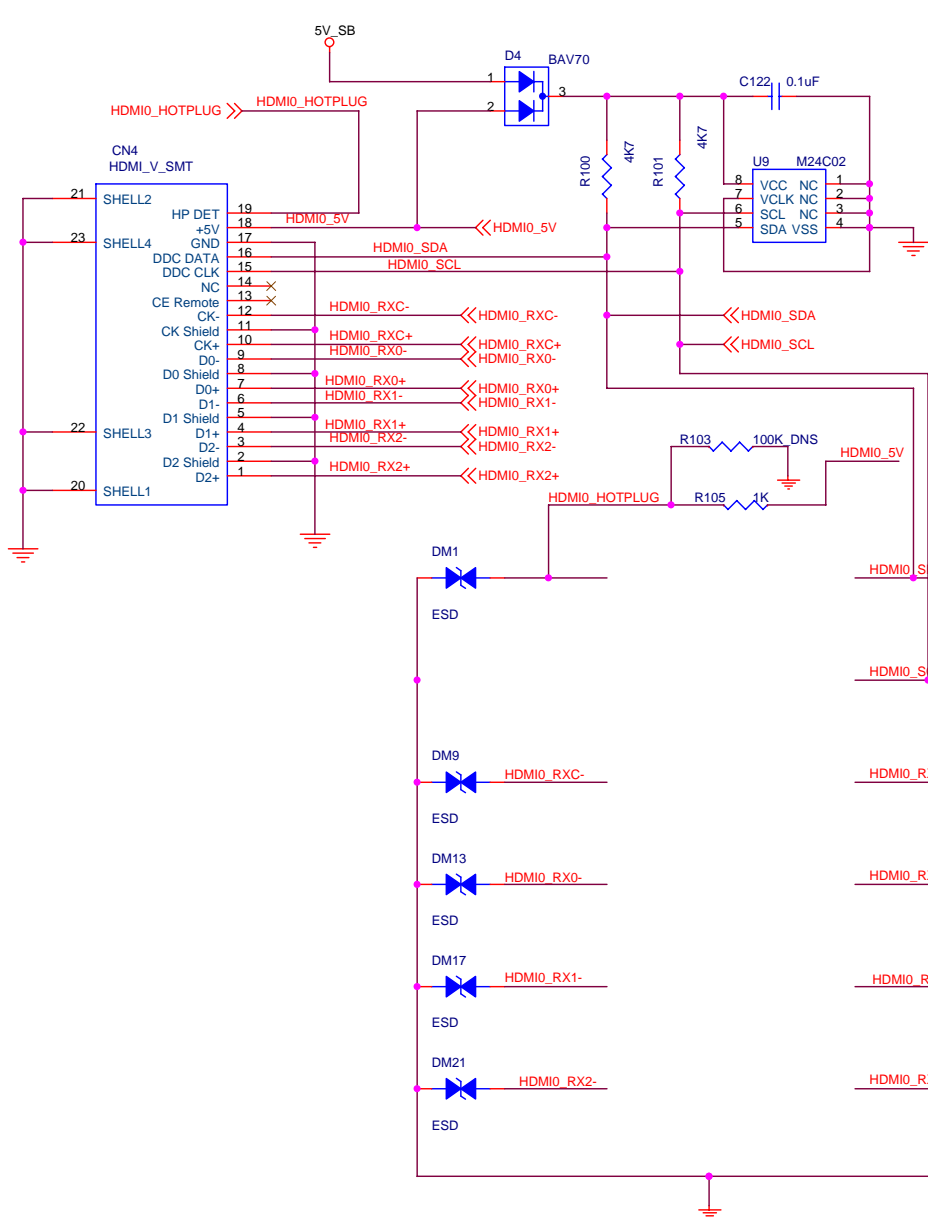


**SVP-CX32_208
(4/4)
Power / Ground**

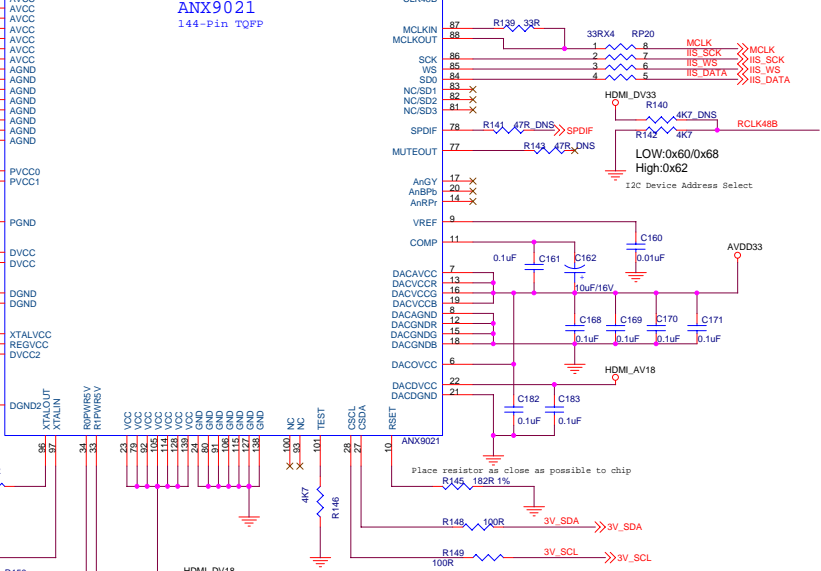
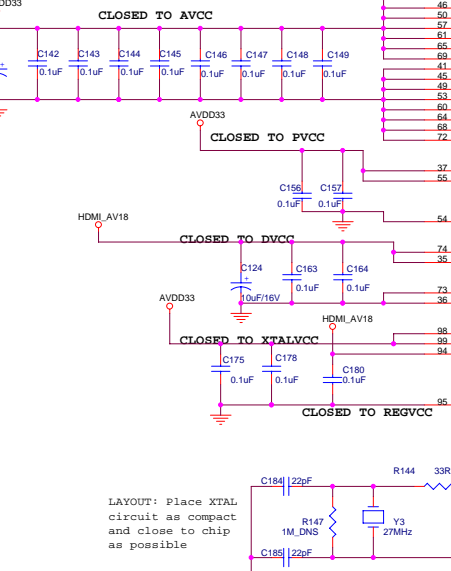
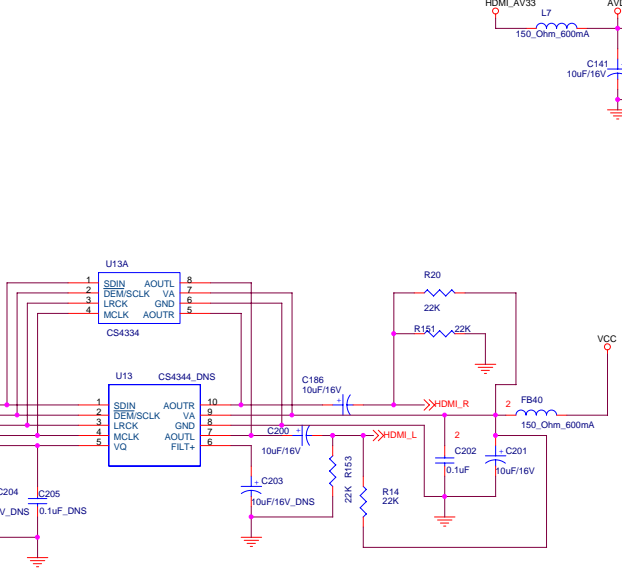
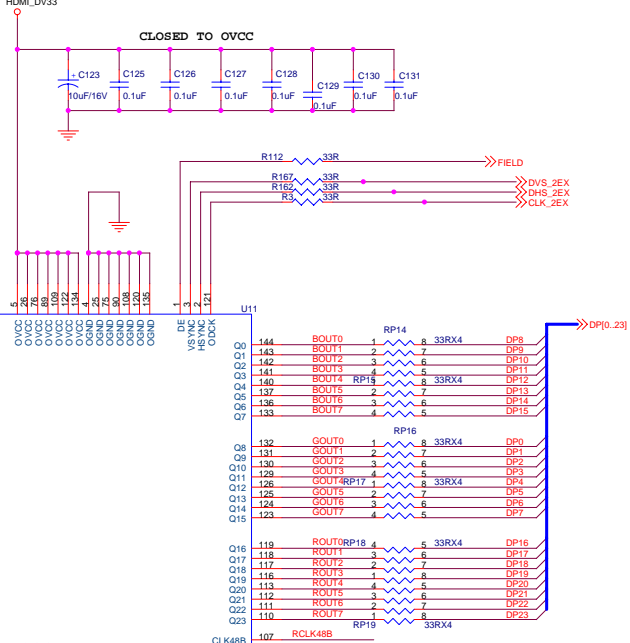
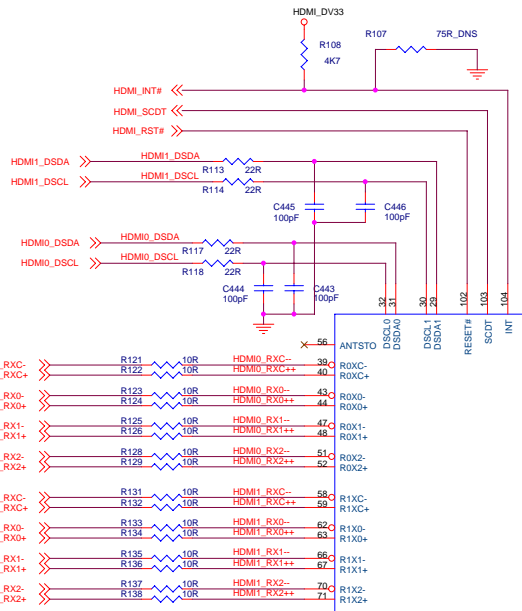
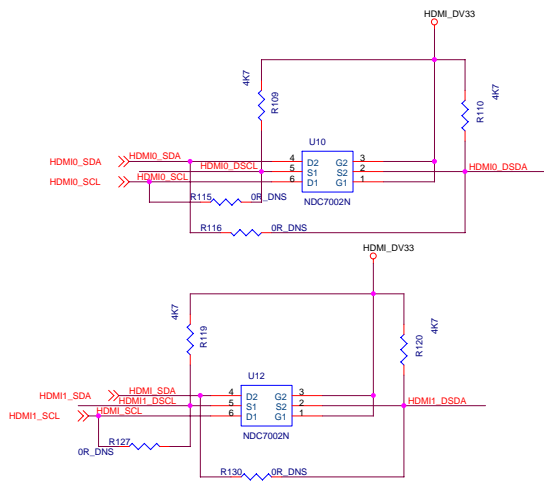


PRELIMINARY

Fuzhou Walasey Technology Limited Company		
Title	SVP_CS32-4	
Size	Document Number	Rev
B	50TR05A FLAT PANEL TV_MAIN	1.0
Date:	Monday, February 27, 2006	Sheet 4 of 21

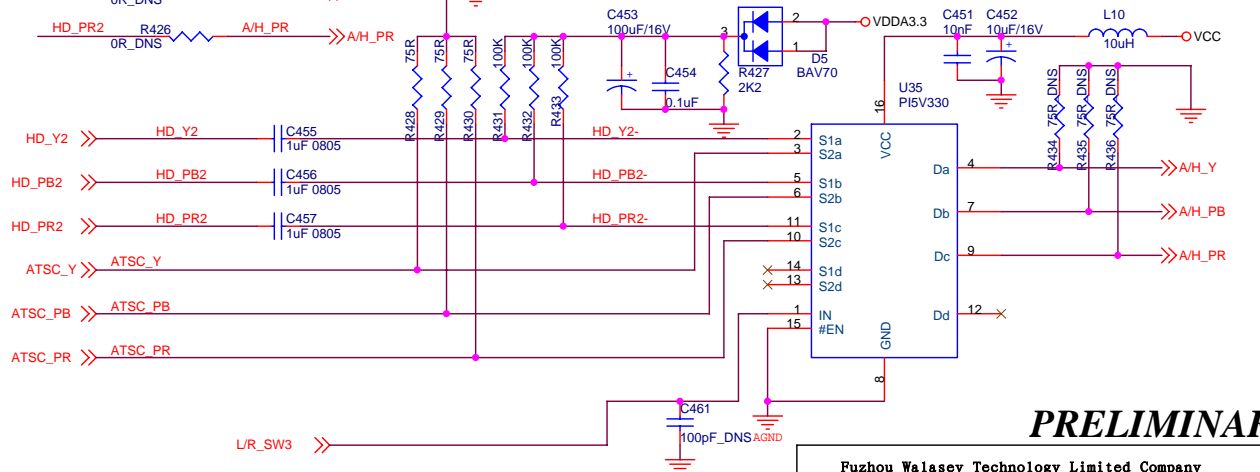
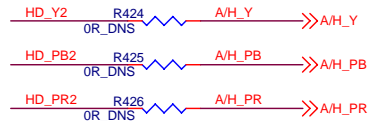
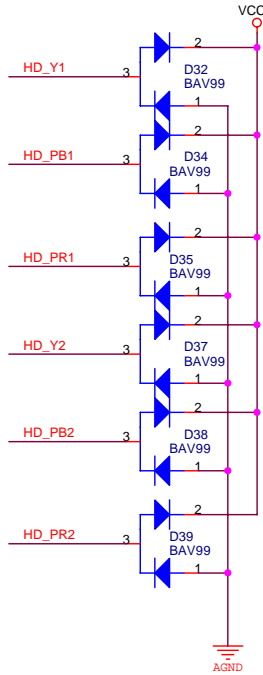
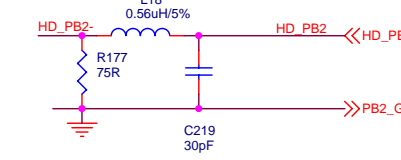
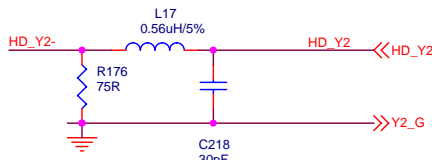
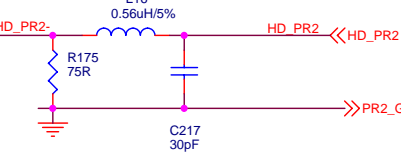
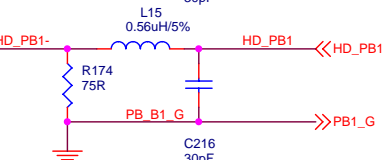
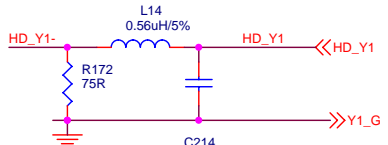
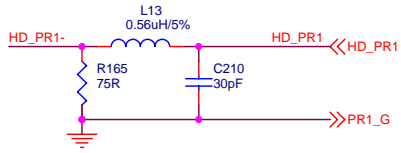
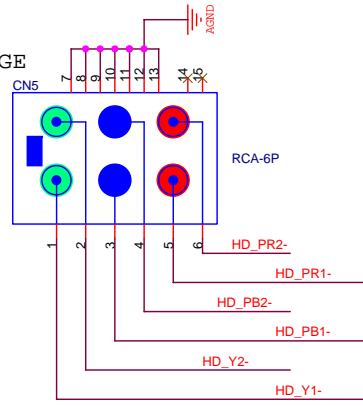
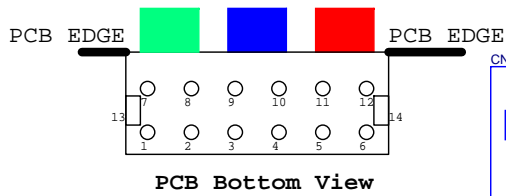


Title		<Title>
Size	Document Number	Rev
B	<Doc>	<RevCode>
Date:	Monday, February 27, 2006	Sheet 6 of 21



LAYOUT: Place XTAL circuit as compact and close to chip as possible

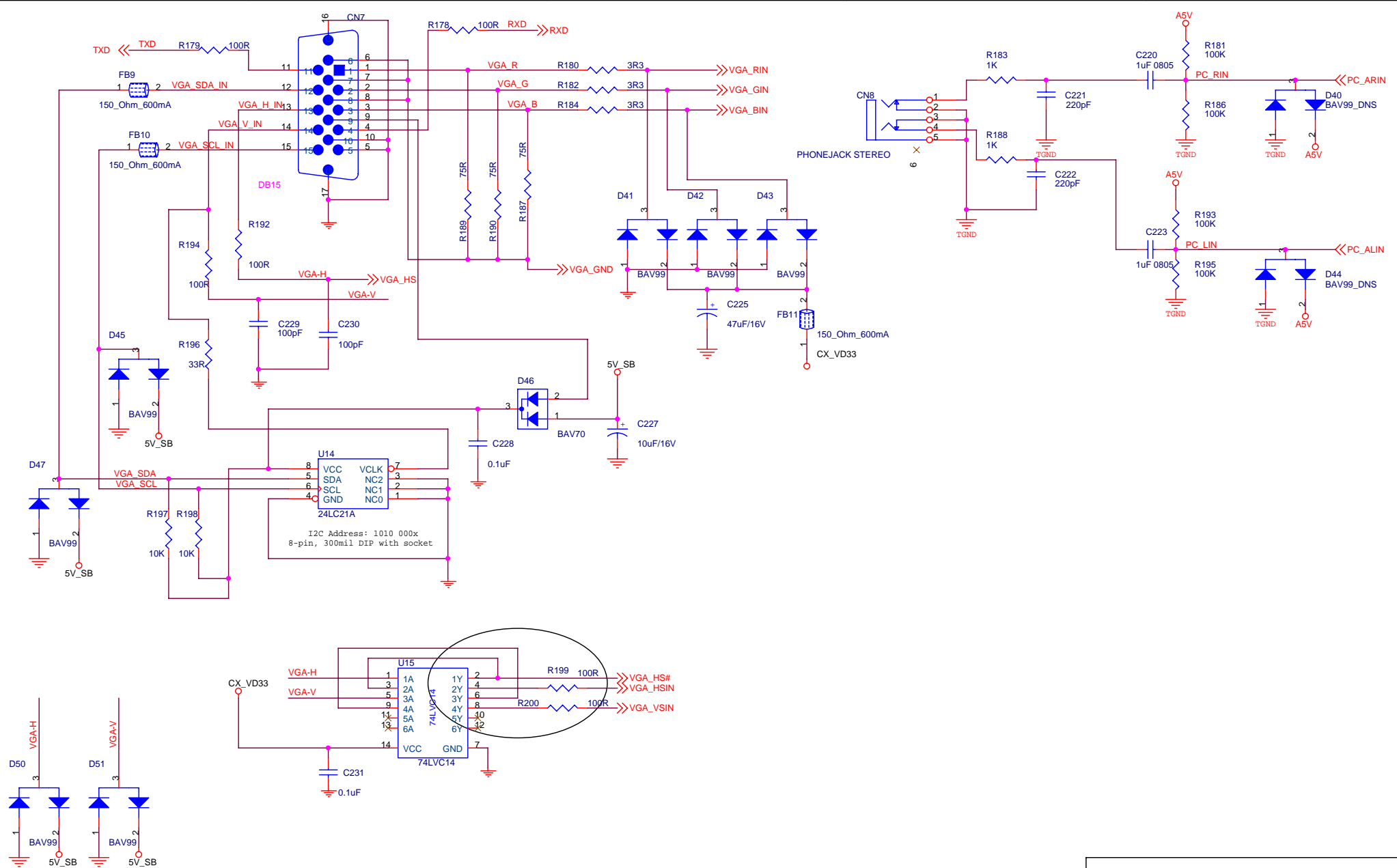
Place resistors as close as possible to chip
R145, 182R 1%



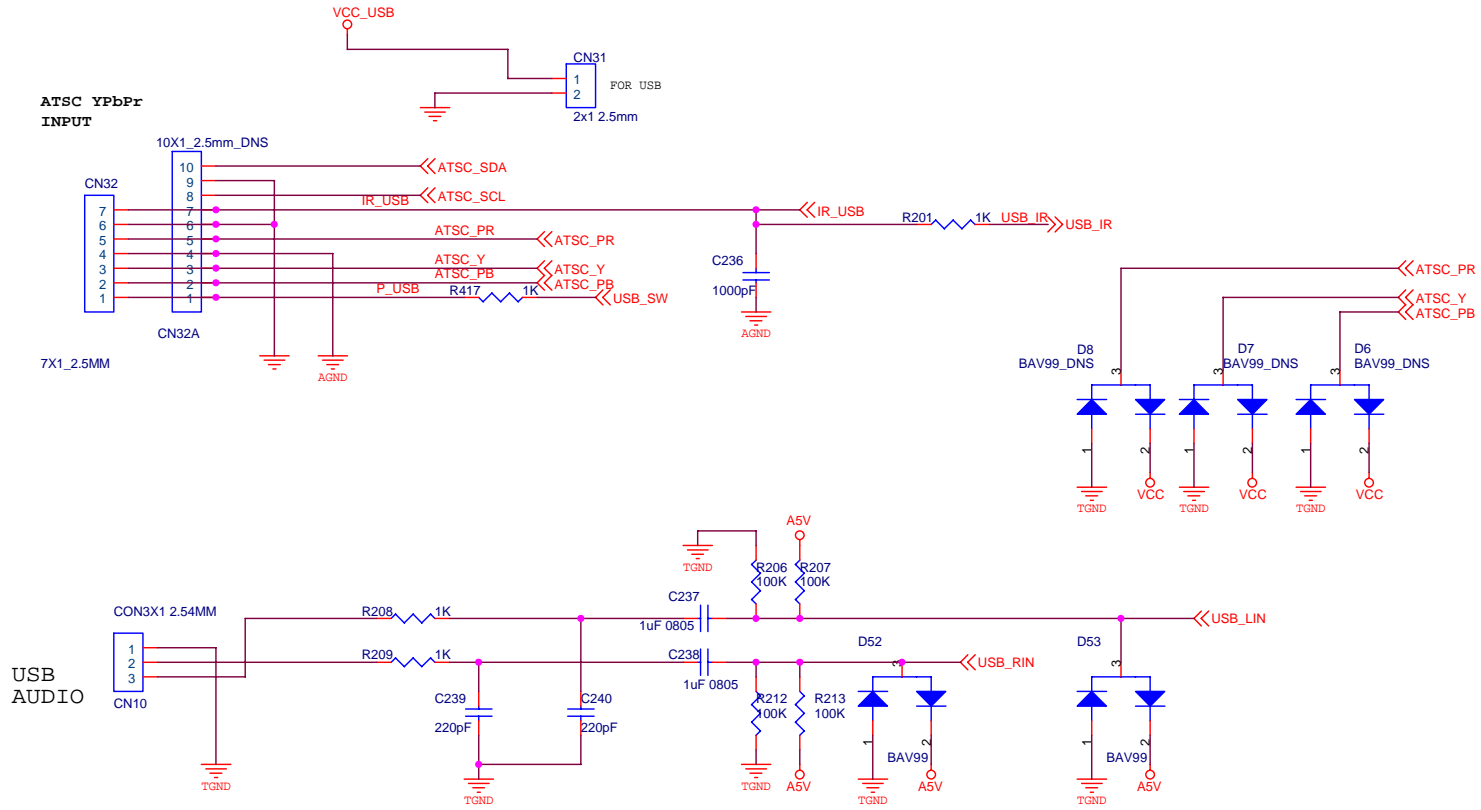
0:S1-->OUTPUT
1:S2-->OUTPUT

PRELIMINARY

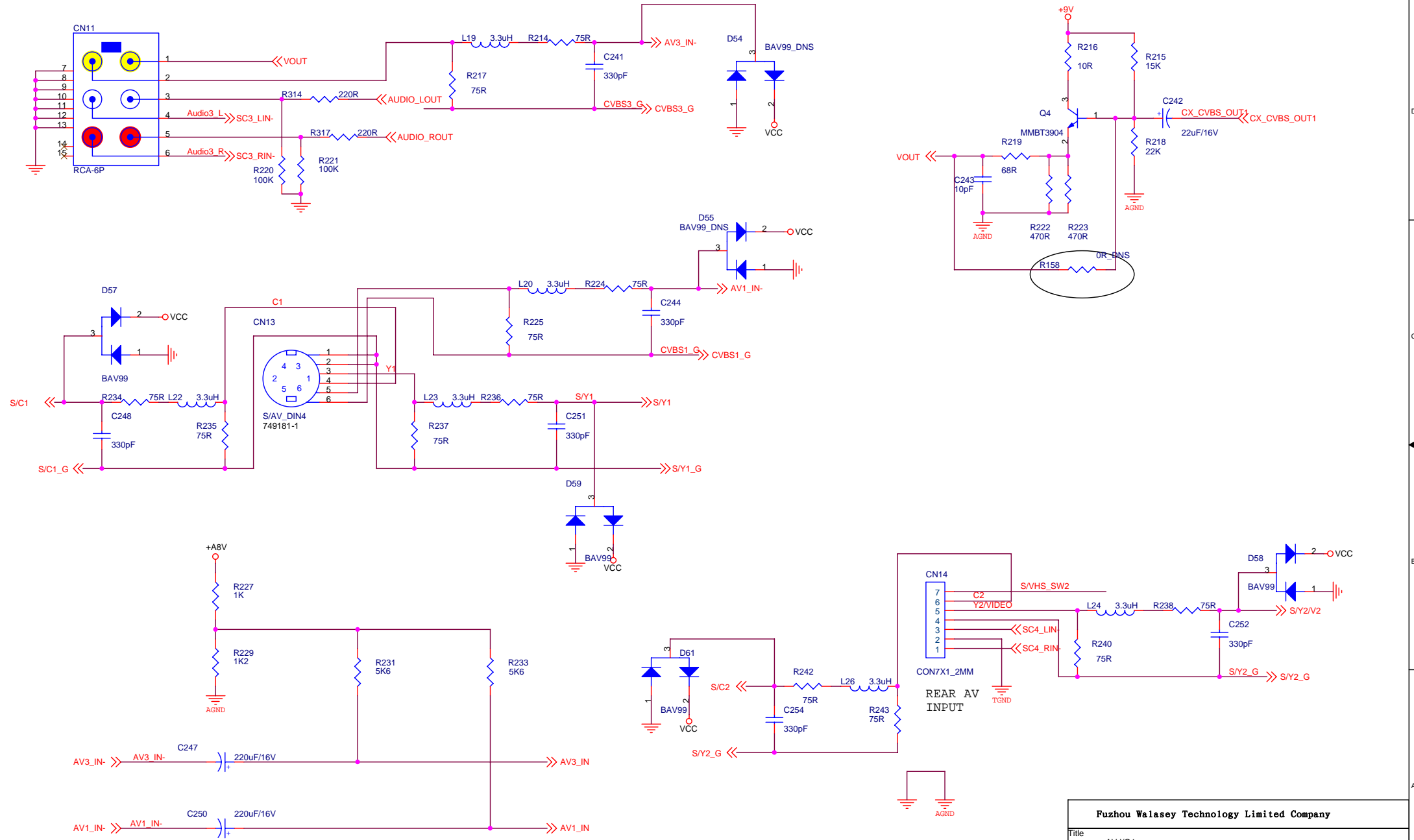
Fuzhou Walasey Technology Limited Company		
Title YPbPr I/O_1		
Size B	Document Number 42TR05A LCD	Rev 1.0
Date Monday, February 27, 2006	Sheet 8	of 21



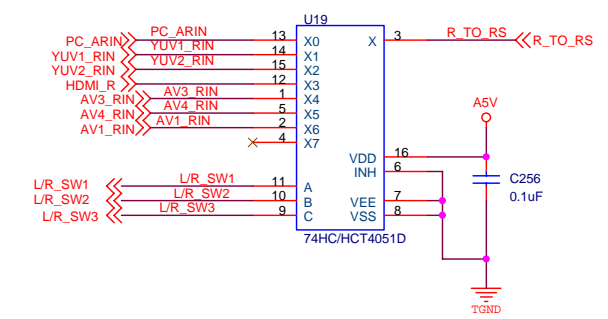
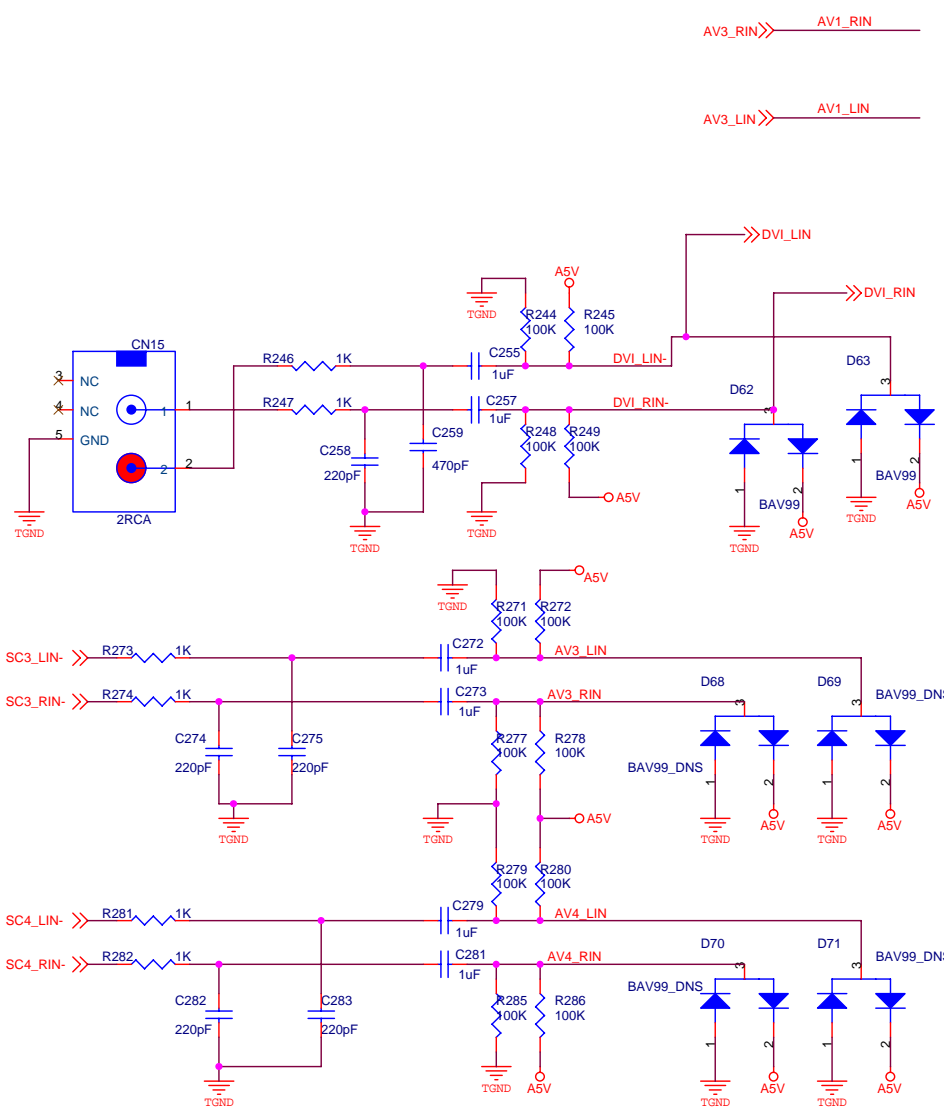
Title		
VGA I/O2		
Size	Document Number	Rev
B	42TR05A LCD	1.0
Date:	Monday, February 27, 2006	Sheet 9 of 21



Fuzhou Walasey Technology Limited Company		
Title		
SVP-CX USB_DIGITAL INPUT		
Size	Document Number	Rev
B	42TR05A LCD	B-01
Date:	Monday, February 27, 2006	Sheet 10 of 21

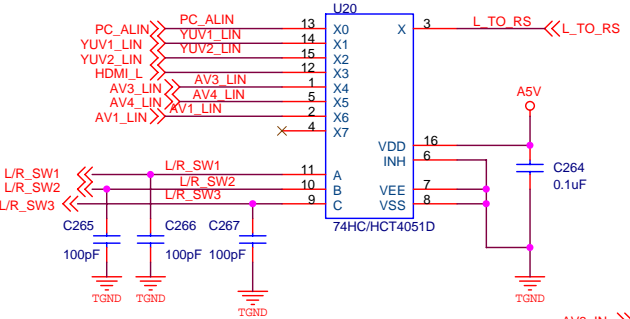


Fuzhou Walasey Technology Limited Company		
Title AV I/O1		
Size B	Document Number 42TR05A LCD	Rev 1.0
Date: Monday, February 27, 2006	Sheet 11	of 21

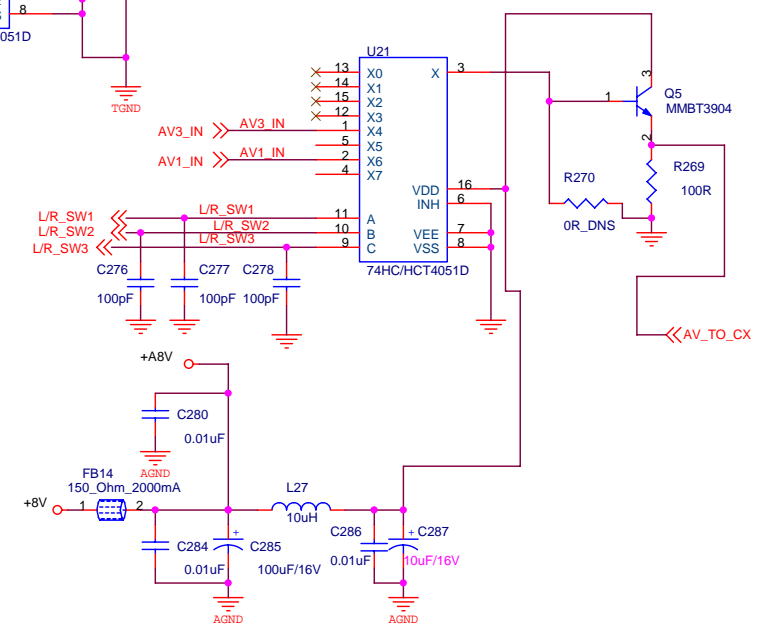


INPUT			OUTPUT
L/R_SW23	L/R_SW22	L/R_SW21	X,Y
0	0	0	PC AUDIO
0	0	1	YUV1 AUDIO
0	1	0	YUV2 AUDIO
0	1	1	HDMI AUDIO
1	0	0	AV3&AUDIO3
1	0	1	AV4&AUDIO4
1	1	0	AV1&AUDIO1
1	1	1	

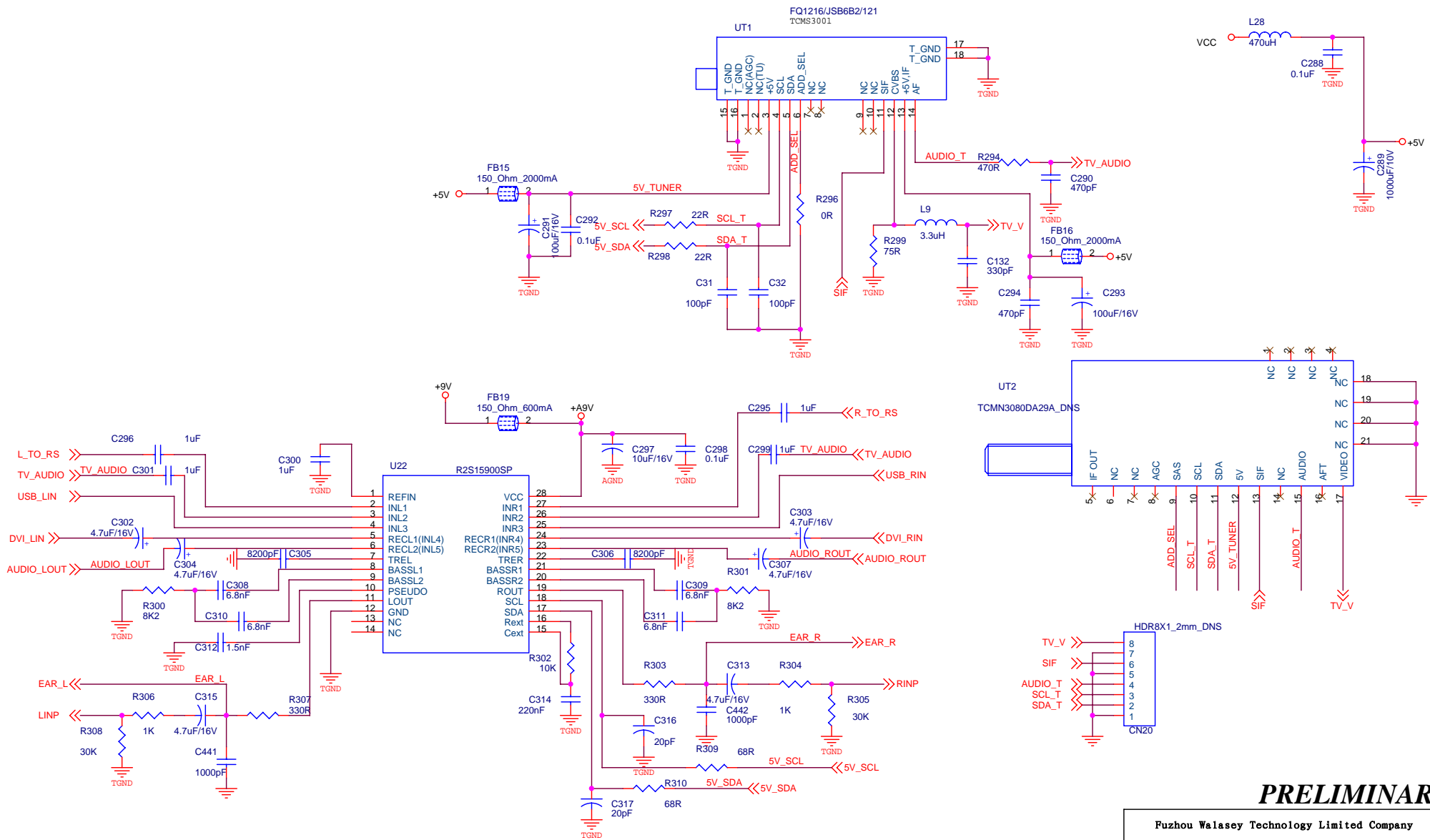
BACK AV
REAR AV
BACK AV



~~AV2&AUDIO2~~

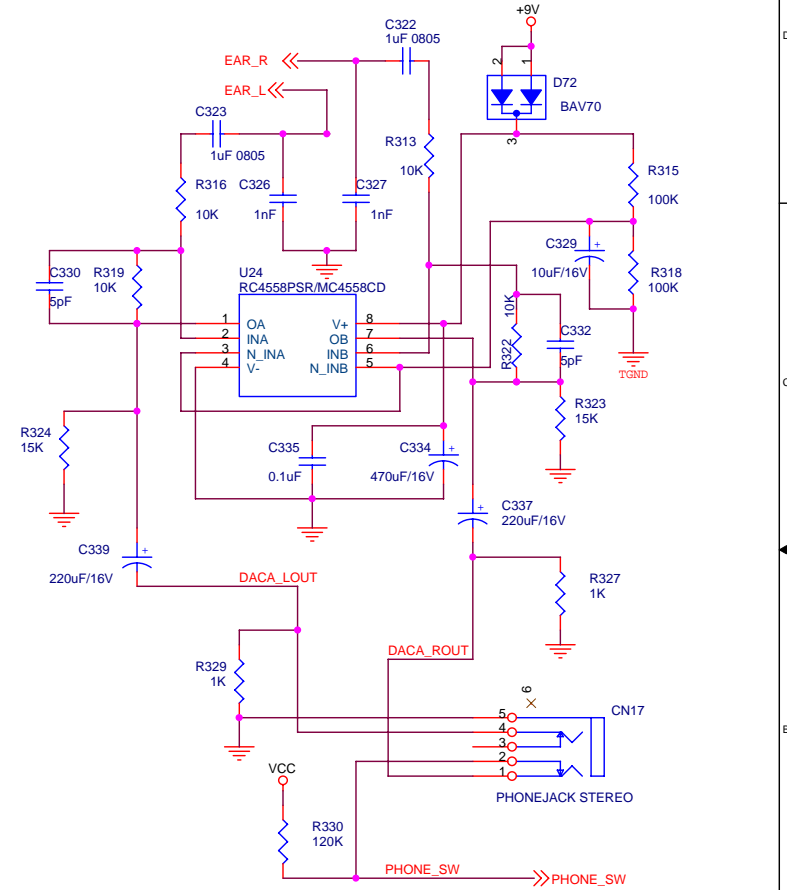
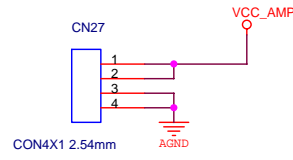
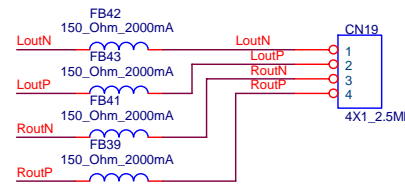
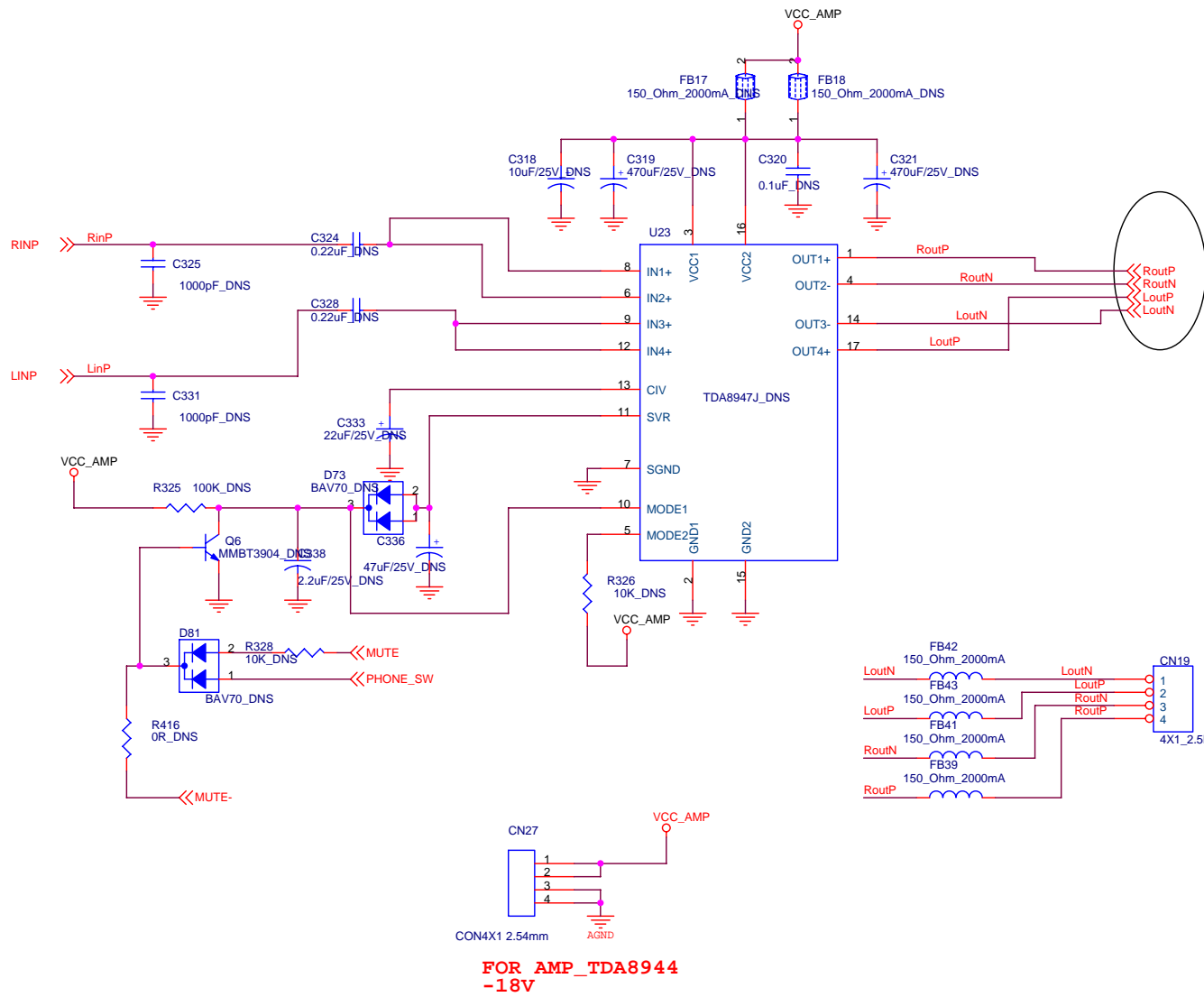


Fuzhou Walasey Technology Limited Company		
Title AV I/O 2		
Size B	Document Number 42TR05A LCD	Rev 1.0
Date: Monday, February 27, 2006	Sheet 12	of 21

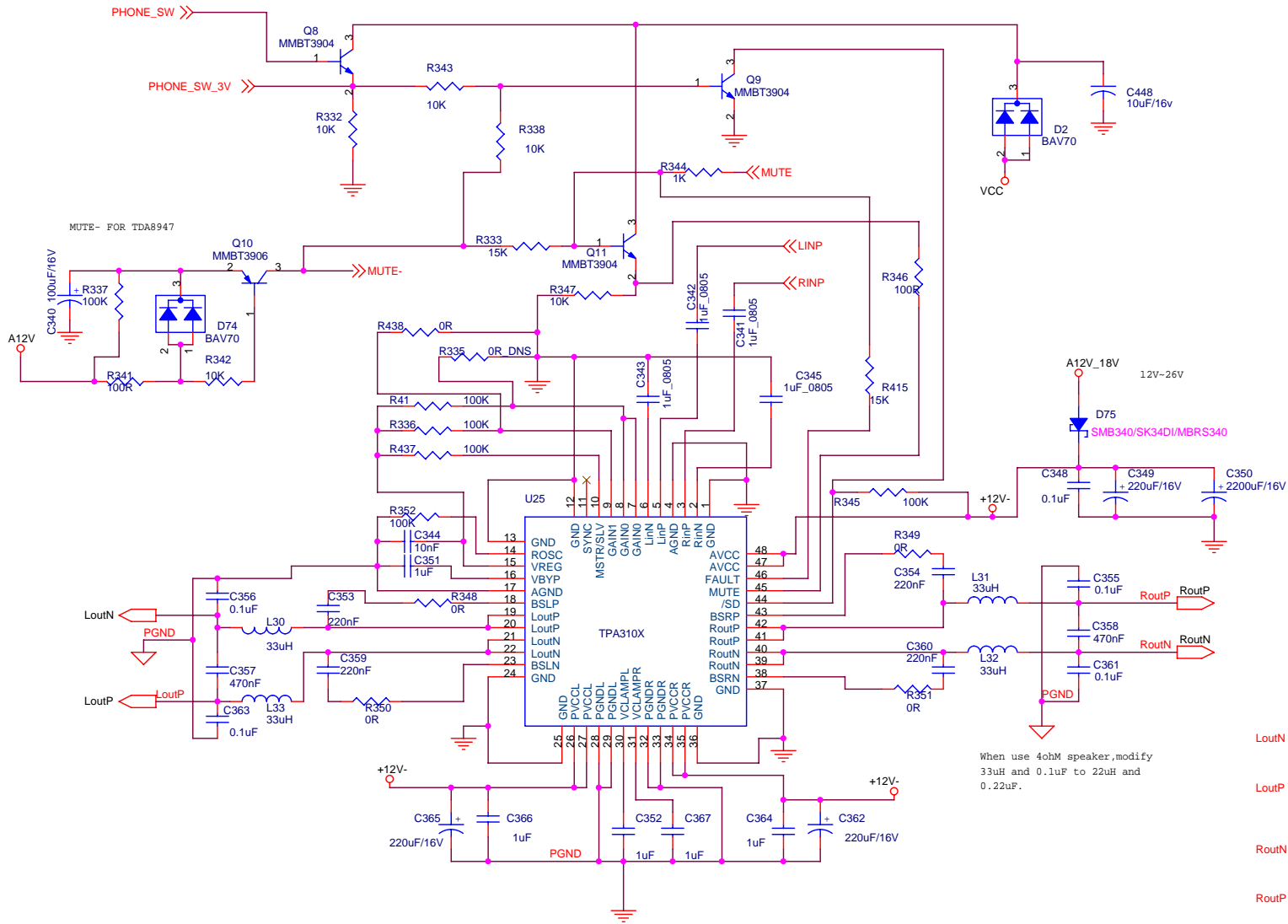


PRELIMINARY

Fuzhou Walasey Technology Limited Company		
Title	AUDIO_TUNER	
Size	Document Number	Rev
B	42TR05A LCD TV	1.0
Date:	Monday, February 27, 2006	Sheet 13 of 21

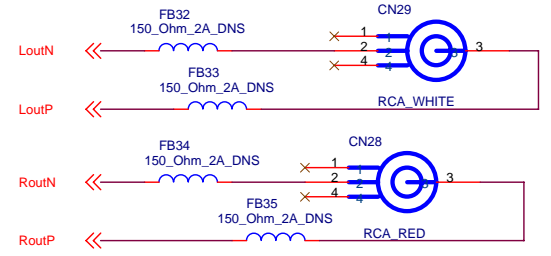


Title		
AMP_TDA8947		
Size	Document Number	Rev
B	42TR05A LCD TV	1.0
Date:	Monday, February 27, 2006	Sheet 14 of 21

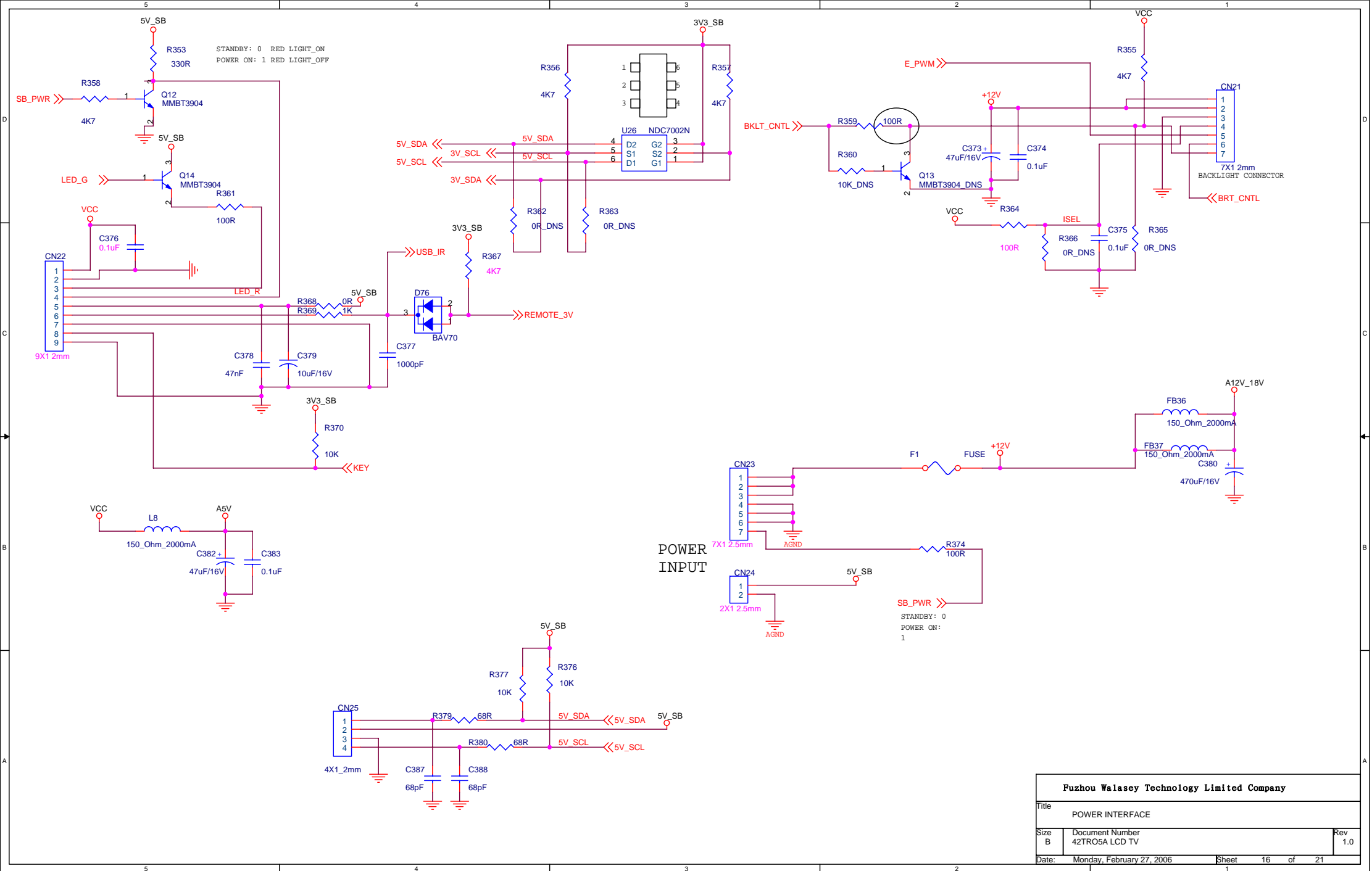


When use 4ohm speaker, modify 33uH and 0.1uF to 22uH and 0.22uF.

1. CA90, CA91, CA99, CA100 PCB FOOTPRINT CHANGED FROM 0603 TO 0805
2. ADDED R202, R203, R204, R205
3. CA80, CA81, CA82, CA83, CA84, CA107, CA112 PCB FOOTPRINT CHANGED FROM 0603 TO 0805

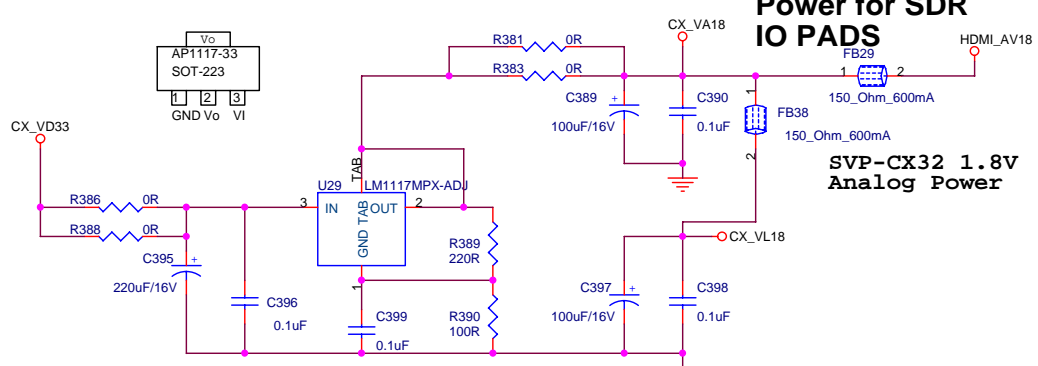


Title		<Title>
Size	Document Number	Rev
B	<Doc>	<RevCode>
Date:	Monday, February 27, 2006	Sheet 15 of 21



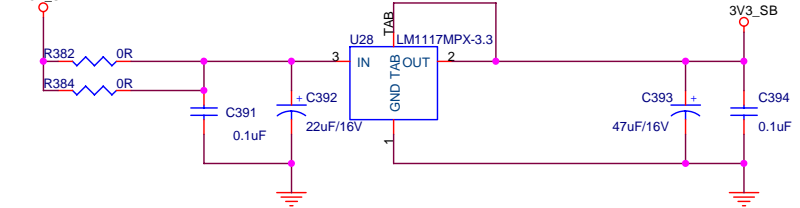
Fuzhou Walasey Technology Limited Company		
Title POWER INTERFACE		
Size B	Document Number 42TRO5A LCD TV	Rev 1.0
Date: Monday, February 27, 2006	Sheet 16	of 21

Power for SDR IO PADS

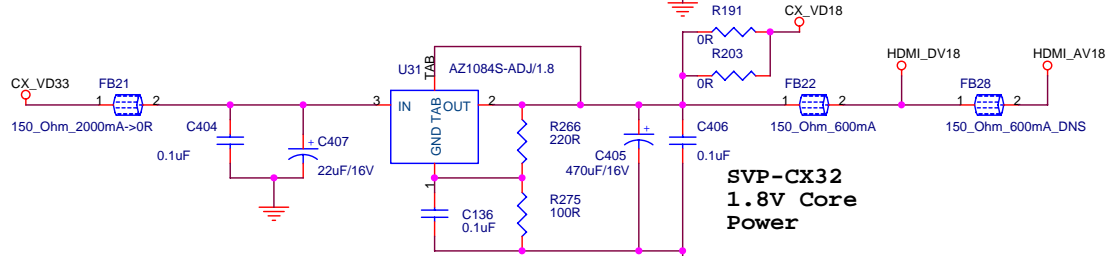
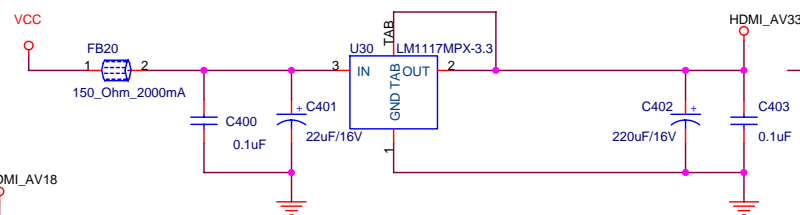


SVP-CX32 1.8V Analog Power

3.3V Stand By Power



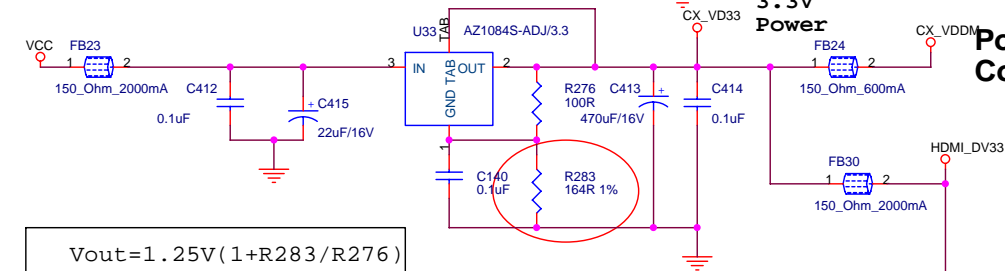
SVP-CX32 HDMI PLL 3.3V Power



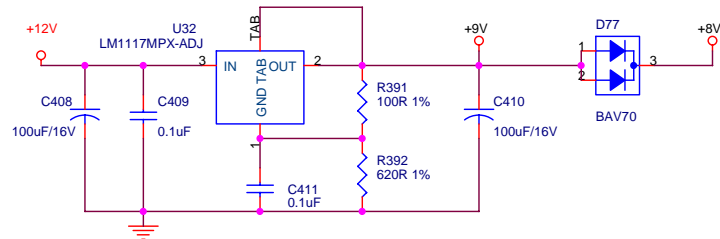
SVP-CX32 1.8V Core Power

SVP-CX32 3.3V Power

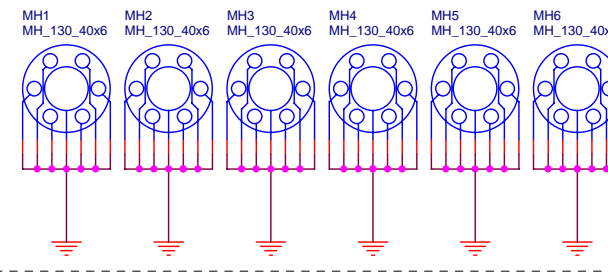
Power for SDR Core Logic



$$V_{out} = 1.25V(1 + R_{283}/R_{276})$$

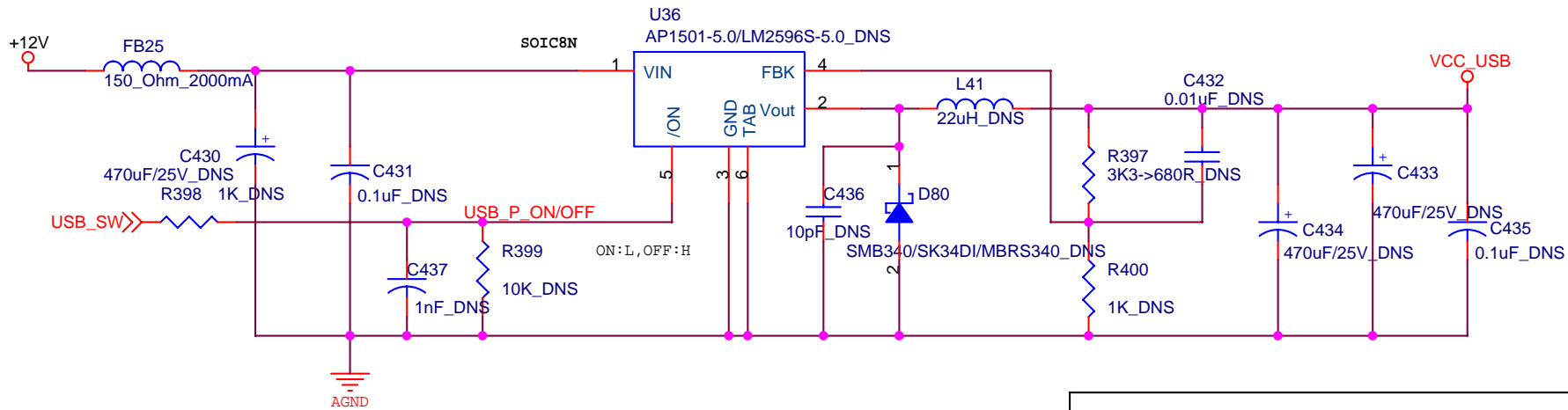
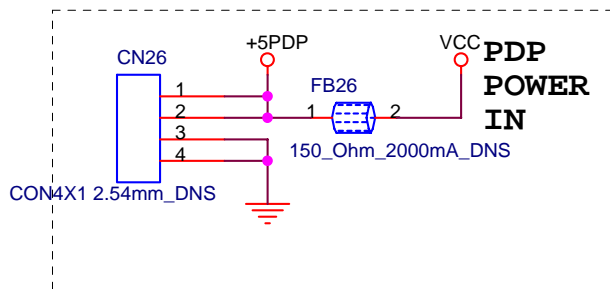
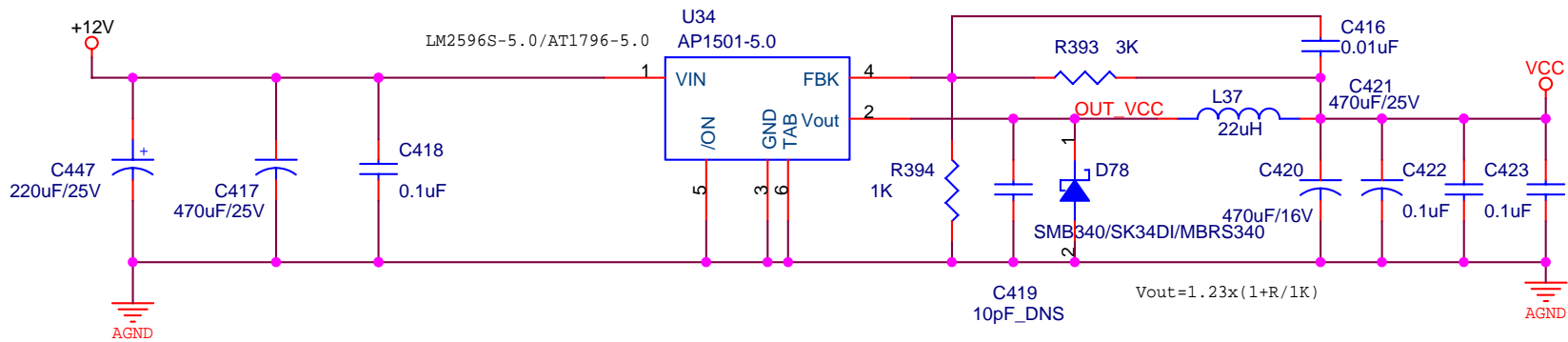


These six holes are in six corners of PCB.



PRELIMINARY

Fuzhou Walasey Technology Limited Company		
Title	POWER	
Size B	Document Number	Rev
	42TR05A LCD TV	1.0
Date:	Monday, February 27, 2006	Sheet 17 of 21



Fuzhou Walasey Technology Limited Company		
Title DC/DC POWER		
Size A	Document Number 42TR05A LCD TV	Rev 1.0
Date: Monday, February 27, 2006	Sheet 18	of 21

